

G series

Portable Industrial Borescope



GIE series portable industrial borescope is a feature-rich and cost-effective product. It adopts high-definition image processing technology and the latest improved camera to ensure a clearer image and a full view of subtle defects. Meanwhile, it has 2 levels of glare suppression, which ensures a clear view when observing reflective surfaces (e.g., metal surfaces); and 2 levels of low-light compensation function can guarantee sufficient light source to make the observing distance farther and the image clearer.

The supported tube options are as follows:

Small diameter: 1.2mm, 2.8mm, 3.0mm side view.

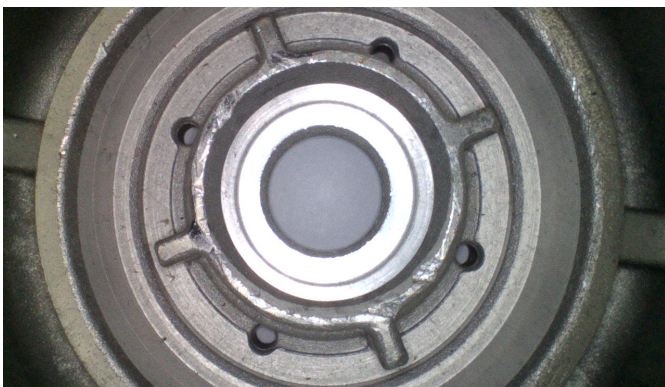
High sensitivity: 3.7mm, 4.5mm, 6mm dual view, 9mm dual view;

High pixel: 4mm, 4.5mm side view, 6mm

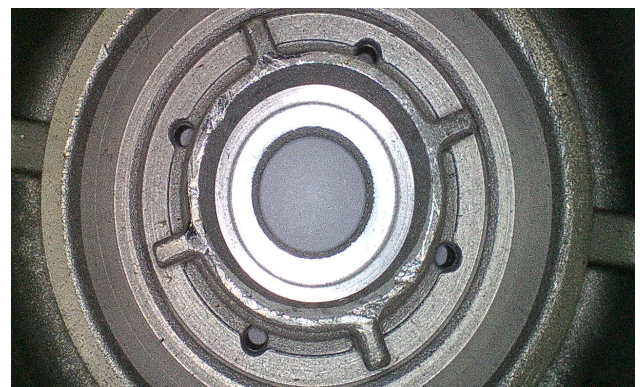
You can choose according to your demands, one base unit with multiple tubes, to get the best matching combination at the best price, to adapt to a variety of working conditions and environments.

Technical Advantage:

1. 5-inch high-definition touch screen, adopting brand-new HD image processing technology, ultra-clear image, minor defects are all under your view.



2.8mm probe/analog signal effect



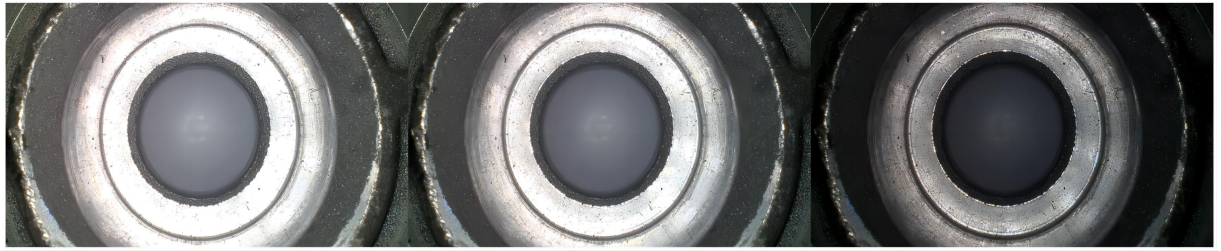
2.8mm probe/analog signal effect

2. Unique function of glare suppression and low light compensation;

Highlightcompensation (HLC): It can effectively suppress the reflection of light source and improve the solution of metal detection;

Backlight compensation(BLC): In the weak light environment, it can see more dark details by the exposure algorithm to improve the image brightness.

HLC Effect

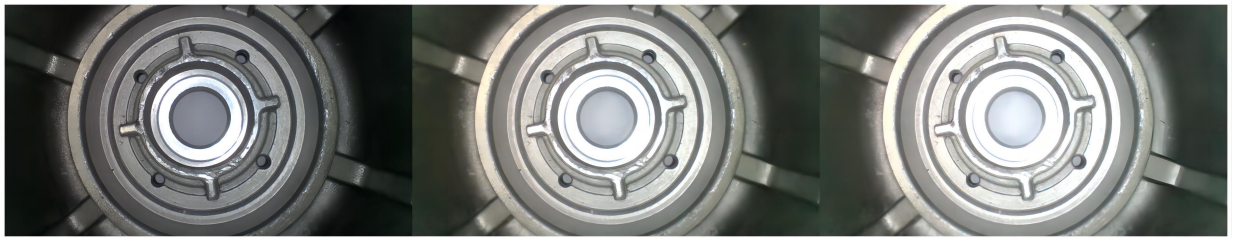


Normal image

Frist grade effect

Second grade effect

BLC Effect



Normal image

Frist grade effect

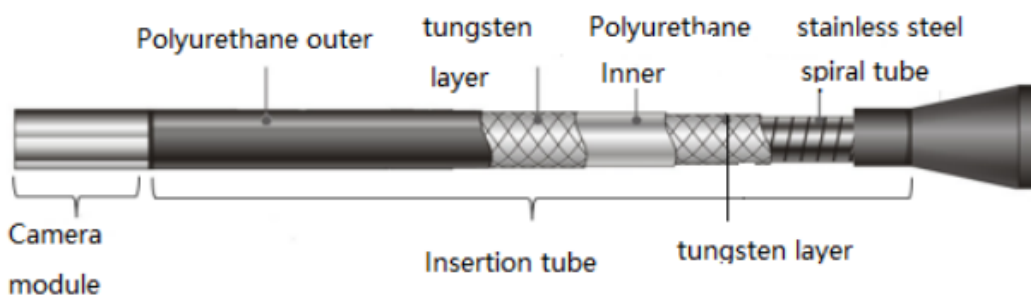
Second grade effect

3.Images can be flipped, frozen, and zoomed in 4 times, making it easy to analyse minor details;

4.Optional probe diameter 1.2mm to 6mm, tube socket design, easy to plug and unplug;



5.Strong abrasion resistance, good corrosion resistance, IP67 protection level: tube made of 316 stainless steel, four-layer of braided.

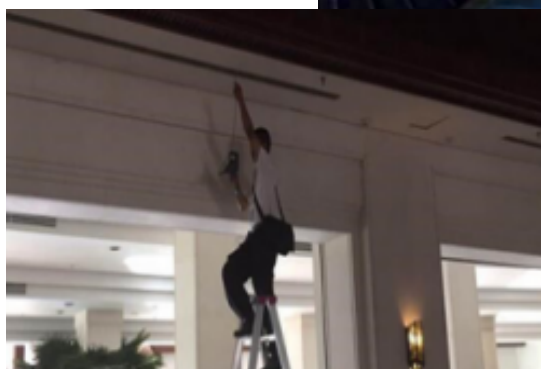
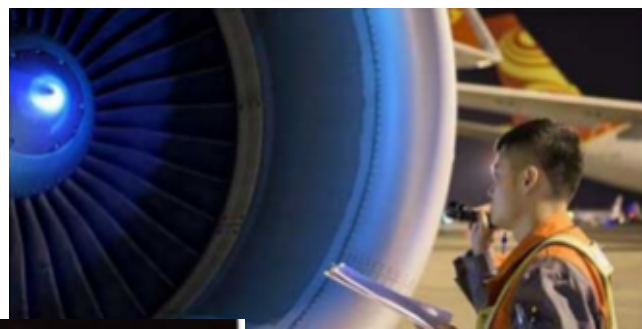


Package:



Application:

Used for various visual inspection work in narrow space, such as automobile engine cylinders, pipelines, castings, foreign matter inside containers, wear inspection, etc.; can be widely used in electric power, petrochemical, railway, ship, research and other fields!



Host	Display	5" IPS Full Viewing Angle LCD with touch screen
	Screen resolution	800(RGB)*480
	High light compensation (HLC)	2 levels of glare suppression (see reflective surfaces)
	Back light compensation(BLC)	2 levels of low light compensation
	Image Sharpness Adjustment	6 levels of image sharpness adjustment
	Image exposure modes	Center exposure, spot exposure
	Image Mirror & Flip Sections	180° Mirror and Flip
	Zoom	4x digital zoom
	Image Freeze	Available
	Image Effects	Normal, B/W, Negative
	White Balance	Auto White Balance, Manual White Balance
	Language	Chinese, English, Spanish, French, German, Russian, Japanese, Korean
	Take a photo	Photo save JPEG file, resolution: 1280x720 / 1920*1080
	Video	Video save MP4 file, resolution: 1280x720 / 1920*1080
	USB port	micro USB 2.0, charging interface DC 5V; can be connected to a computer to copy files
	Data I/O port	HDMI
	Internal storage	TF card (support up to 32GB)
Battery	Two 18650 lithium batteries(replaceable and chargeable)	
Standby time	≥6 h	
Operation environment	Monitor working temperature	-10~50°
	Probe working temperature	-20~60°
	Relative humidity	90%
	Waterproof grade	Probe IP67

Model No	Insertion tube type	Description								
		Diameter [mm]	Insertion Tube Length [m]	Camera			Optic		Light	
				Location	Head Type	Resolution	Depth of Field	Angle of View	Type	[Lux]
G1010FN-N	tungsten braid	1.2	1	Front	H4	400*400	3-50mm	120°	LED	1,500
G2010FN-N	tungsten braid	2	1	Front	H3	400*400	3-50mm	90°	LED	3,000
G2020FN-N			2							
G2030FN-N			3							
G3010FN-N	tungsten braid	2.8	1	Front	H5	400*400	5-50mm	120°	LED	5,000
G3020FN-N			2							
G3030FN-N			3							
G3010SN-N	tungsten braid	3	1	Side	H1	400*400	3-50mm	120°	LED	5,000
G3020SN-N			2							
G3030SN-N			3							
G3010SN-R	tungsten braid	3	1	Side	H1	400*400	3-50mm	120°	LED	5,000
G3020SN-R			2							
G3030SN-R			3							
Description										
Model No	Insertion tube type	Diameter [mm]	Insertion Tube Length [m]	Camera			Optic		Light	
				Location	Head Type	Resolution	Depth of Field	Angle of View	Type	[Lux]
		G4010FM-N	Stainless steel wear-resistant	4	1	Front	BH	1280*720	10-100mm	90°
G4020FM-N	2									
G4030FM-N	3									
Description										
Model No	Insertion tube type	Diameter [mm]	Insertion Tube Length [m]	Camera			Optic		Light	
				Location	Head Type	Resolution	Depth of Field	Angle of View	Type	[Lux]
		G4010SN-N	Stainless steel wear-resistant	4.5	1	Side	BC	1280*720	3-50mm	90°
G4020SN-N	2									
G4030SN-N	3									
G4010SN-R	Stainless steel wear-resistant	4.5	1	Side	BC	1280*720	3-50mm	90°	LED	8,000
G4020SN-R			2							
G4030SN-R			3							
Description										
Model No	Insertion tube type	Diameter [mm]	Insertion Tube Length [m]	Camera			Optic		Light	
				Location	Head Type	Resolution	Depth of Field	Angle of View	Type	[Lux]
		G6010FM-N	Stainless steel wear-resistant	6	1	Front	BB	1280*720	10-100mm	90°
G6020FM-N	2									
G6030FM-N	3									
Description										
Model No	Insertion tube type	Diameter [mm]	Insertion Tube Length [m]	Camera			Optic		Light	
				Location	Head Type	Resolution	Depth of Field	Angle of View	Type	[Lux]
		G6030DM-N	tungsten braid	6	3	Dual	HD	450,000	F:10-100mm /S: 5-50mm	90°
G6050DM-N	5									
G6080DM-N	8									
G6100DM-N	10									
G6150DM-N	15									
G6050SM-N	6	5		Side	PC		7-80mm	110°	LED	20,000
G6080SM-N		8								

Manufacturer:

Shenzhen Yateks Co., LTD

11th Floor, Block B, Building 3, Huangge North Road, Tian An Cyber Park, Longgang District, Shenzhen, China (Zip: 518172)

86-755-89308753

Info@yateks.com

www.yateks.com