



# Product Range

2024/25

**DART**  
SYSTEMS

Call **+44 (0) 1761 404 870**

[sales@dartsystems.co.uk](mailto:sales@dartsystems.co.uk) [www.dartsystems.co.uk](http://www.dartsystems.co.uk)

Dart Systems Ltd, Environment House, First Avenue,  
Westfield Industrial Estate, Radstock, Somerset, BA3 4BS UK



## Dart Systems

### Expertise, Knowledge and Innovation...

**Hidden problems, whatever they may be; large or tiny; whether they're inside industrial components, underground or overground; don't just cost in time and money, they can also cause serious threats to the safety of property and people.**

**At Dart Systems we are committed to helping our customers solve their 'hidden problems' with a range of versatile, specialist inspection products that have been designed specifically to not only save time and money, but in some cases – lives.**

#### Diverse Experience

Over the years, our experience has developed through working within a variety of diverse market sectors. From supplying solutions to industries such as drains and ducting, through to technical manufacturing fields such as aerospace and automotive. Our products are sensitive and responsive, but also robust enough to deal with the harshest and sometimes extreme environments. And our natural diversification into search and surveillance equipment has seen us designing and developing adaptable, ergonomic and technically innovative solutions that are now being utilised by Governments, Police and the Military both in the UK and in hostile environments abroad.

#### Design and Development

Embracing the latest innovative technologies and working with strategic partners, manufacturers and customers across many markets, our in-house design team are on a continuous mission to seek-out, research, design, develop and improve our range of inspection and surveillance products and accessories. We also work closely with other specialist manufacturers and brands, acting as a distributor and solutions provider and enhancing our own range of products. This enables us to provide the best solutions to our customer's problems.

#### Providing Solutions

At Dart our strength comes from the knowledge and experience we've built up through dealing with so many different companies and problems over the years. We are a true 'solutions' provider not just a supplier of products. And with so many different customer requirements, and so many accessories available that can be utilised with both our own and other manufacturer's core systems, we encourage our customers to talk to us first so we can help them decide on the best solution for their particular problem.

#### Bespoke Solutions

It's not unusual for some problems to be so challenging that they require specific alterations, adaptations or additions outside of what is currently available. And we welcome and are able to rise to these challenges. Because we have our own in-house design and development team who keep abreast of the latest products and technologies, we are able to provide specific ideas and solutions in these special cases.



## Contents

### Test & Measurement

|                                       |   |
|---------------------------------------|---|
| Micro CD-100 Combustible Gas Detector | 4 |
| Micro IR-200 Infrared Thermometer     | 4 |

### Inspection Cameras

|            |   |
|------------|---|
| CA25       | 5 |
| CA150      | 5 |
| CA350      | 6 |
| CA350X     | 6 |
| NanoReel   | 7 |
| MicroDrain | 7 |
| MicroReel  | 7 |

### RIDGID Drain Cameras

|   |    |
|---|----|
| Compact 2 Range                         | 8  |
| SeeSnake CS12X & CS6X                   | 10 |
| SeeSnake Standard Camera with Truesense | 12 |
| SeeSnake Mini Camera with Truesense     | 12 |

### Dart Drain Cameras

|  |    |
|--|----|
| Drain Inspection Camera                  | 13 |
| Self Levelling System                    | 13 |
| Dart Inspection Camera                   | 14 |
| Pan & Tilt System                        | 15 |
| Deep Underwater Borehole Camera          | 15 |
| Mini DartEye Pipeline Inspection Camera  | 16 |
| DX & DX HD S/L Inspection Camera         | 18 |
| Skids                                    | 20 |
| DX Mini Pipeline Inspection Camera       | 22 |
| RIG                                      | 22 |
| Gun Barrel Inspection Camera - Artillery | 26 |
| SECA Pole Camera                         | 28 |
| Cavity Camera                            | 29 |
| Probes                                   | 29 |
| Chimney Camera                           | 30 |
| Drop Hole/Bore Hole Camera               | 30 |
| HV Wireless Camera                       | 31 |

### Articulating Endoscopes, Videoscopes

|                                    |    |
|------------------------------------|----|
| ME LCD Endoscopes                  | 32 |
| ME Endoscope Cables                | 33 |
| VJ-ADV Videoscopes                 | 35 |
| iRis DVR 5                         | 38 |
| XLED digital                       | 39 |
| iSeries interchangeable probes     | 40 |
| UV Light illumination              | 40 |
| iWC Working Channel                | 40 |
| Microflex                          | 41 |
| iFlex                              | 41 |
| Rigid Endoscopes - Industrial Line | 42 |
| Multi Swing Prism borescope        | 42 |

### Light Sources

|           |    |
|-----------|----|
| SuperNOVA | 43 |
| Luxxor 24 | 43 |
| LUMLED    | 43 |

### Security

|                    |    |
|--------------------|----|
| iRis MiL           | 44 |
| IR Under Door kit  | 44 |
| flexLED            | 44 |
| Hawkeye Borescopes | 45 |

### Articulating HD Videoscopes

|                |    |
|----------------|----|
| HD Videoscopes | 46 |
|----------------|----|

### Drain Cleaning and Water Jetters

|                                   |    |
|-----------------------------------|----|
| Toilet Augers                     | 48 |
| Power Spinner                     | 48 |
| K-25 Hand Spinner                 | 48 |
| PowerClear Drain Cleaning Machine | 49 |
| K-45AF Sink Machine               | 50 |
| K-40 Sink Machine                 | 50 |
| K-400 Drum Machine                | 51 |
| K-750 Drum Machine                | 51 |
| FlexShafts                        | 52 |
| KJ-1590 Water Jetter              | 54 |
| KJ-2200 Water Jetter              | 54 |
| KJ-3100 Water Jetter              | 54 |

### Pipe Cutters

|   |    |
|---|----|
| C-Style Close Quarters Copper Tubing Cutter | 55 |
| Quick Acting Tube Cutters                   | 55 |
| Stainless Steel Tubing Cutters              | 55 |
| 2 in 1 Close Quarters AUTOFEED Cutter       | 55 |

### Press Tools and Strut Slayr

|                         |    |
|-------------------------|----|
| RP 350/351 Press Tool   | 56 |
| Strut Shear Head        | 57 |
| RP 115 Micro Press Tool | 57 |

### Cobras and Flexitrac

|                                       |    |
|---------------------------------------|----|
| Mini 4.5mm PipeDart                   | 58 |
| Ferret 6mm PipeDart                   | 58 |
| Compact 9mm PipeDart                  | 59 |
| Large Frame 9mm, 11mm & 14mm PipeDart | 59 |
| PipeDart Accessories                  | 60 |
| PipeTracer - Flexitrac                | 61 |

### Locators

|                  |    |
|------------------|----|
| C-Scope Locators | 64 |
| RIDGID Locators  | 66 |
| Rodding Sondes   | 69 |

### Miscellaneous

|                                    |    |
|------------------------------------|----|
| Strap-Lock Pipe Handle             | 70 |
| RIDGID Professional Storage System | 70 |

## Miscellaneous

### Micro CD-100 Combustible Gas Detector

The RIDGID® micro CD-100 Combustible Gas Detector provides simple and quick readings to identify the presence of combustible gases. With adjustable sensitivity, even low-levels of gases can be detected in seconds. It ensures proper gas line installations, checks for maintenance and repair needs and quickly pinpoints combustible gas leaks.

- Rugged ergonomic design makes it comfortable to use, yet tough.
- Tri-Mode Detection™ for option to be alerted with a visual, audible or vibration alerts which can be adjusted for your environment.
- Adjustable sensitivity settings provide precise leak locating with the touch of a button.
- 16" (40 cm) flexible probe allows location and detection of leak in hard-to-reach and confined spaces.
- Field replaceable sensor means more up-time and less time waiting for repairs.



| Model No  | Description                           |
|-----------|---------------------------------------|
| 411-36163 | Micro CD-100 Combustible Gas Detector |

### Micro IR-200 Infrared Thermometer

The RIDGID® micro IR-200 Non-Contact Infrared Thermometer provides simple, quick and accurate surface temperature readings at the push of a button. Simply squeeze the trigger and point the ultra-sharp dual class II lasers at the surface being measured. The micro IR-200 provides an immediate temperature measurement on a clear, easy-to-read backlit LCD display. In addition to numerous other uses, this rugged and compact instrument enables professional tradesman to diagnose heating and ventilation problems, perform preventative monitoring of electrical motors and systems, troubleshoot steam traps and quickly check fuses or circuit breakers for overheating – all without contact.

- Ultra Sharp Dual Class II Lasers easily identify the surface area being measured.
- 30 To 1 Distance To Spot Ratio allows you to take more accurate measurements from a farther distance.
- Adjustable Emissivity to accurately measure the temperature of virtually any surface.
- Audible and Visual High and Low Alarms quickly alert you to temperatures outside of the ranges that you set.
- Bright Backlit Display which can be toggled on in poorly lit areas.
- Tripod Mount Capable for repeatable, precise temperature measurements.



| Model No  | Description                                   |
|-----------|---|
| 411-36798 | Micro IR-200 Non-Contact Infrared Thermometer |

## Other Test and measurement meters available from Dart Systems are:-

**Micro HM-100 Humidity & Temperature Meter** Measures air humidity and temperature

**Micro CM-100 Digital Clamp Meter** Measures AC/DC current, voltage, resistance, capacitance etc

**Micro DM-100 Digital Multimeter** Measures 11 electrical functions from AC/DC Voltage to Temperature

| Model No  | Description                  |
|-----------|------------------------------|
| 411-37438 | Humidity & Temperature Meter |
| 411-37423 | Digital Multimeter           |
| 411-37428 | Digital Clamp Meter          |



### CA25

The CA25 is the entry level Inspection Camera in the RIDGID range with a smaller LCD screen and a fixed (non-extendable) camera cable. It's lightweight, handheld design means it can be carried anywhere providing solutions when and where you need them. The CA25 is ideal for numerous applications from inspecting engines to boat survey, inspecting cables in walls to locating lost keys etc.

- 2.5" Colour LCD Screen
- 4 Adjustable LED's
- 17mm dia fixed camera cable
- Cable length 3ft
- Accessory Kit: 45° Mirror, Magnet & Hook
- Image can rotate at 180° intervals
- Powered by 4 x AA batteries
- Supplied in blow molded carry case



| Model No  | Description                           |
|-----------|---------------------------------------|
| 501-40043 | RIDGID CA25 Inspection Camera (40043) |



### CA150

The CA150 is the next step up in RIDGID's hand held inspection camera range. With a larger 3.5" LCD screen and the ability to extend the 3' camera reach up to 30' the CA150 is ideal for viewing into lofts, under floorboard, ceiling voids, behind cabinets etc. The CA150 now has the ability to capture up to 20 images to its internal memory for reviewing later. This unit has proved extremely useful in endangered species conservation such as bats/badgers etc.

- 3.5" colour LCD screen
- Removable camera cable
- 4 fully adjustable LED's
- AV port
- Image can rotate at 180° intervals
- Up to 20 images saved to internal memory
- Accessory kit: 45° Mirror, Magnet & Hook
- Powered by 4 x AA batteries
- Supplied in blow molded carry case

| Accessories |                               |
|-------------|-------------------------------|
| Model No    | Description                   |
| 501-37108   | 3' Extension Cable (37108)    |
| 501-37113   | 6' Extension Cable (37113)    |
| 501-37098   | 6mm x 1m Camera Cable (37098) |
| 501-37093   | 6mm x 4m Camera Cable (37093) |
| 501-37123   | Accessory Kit (37123)         |

| Model No  | Description                           |
|-----------|---------------------------------------|
| 501-36848 | RIGID CA150 Inspection Camera (36848) |



### CA350

The CA350 is a step on from the CA330. It has the ability to capture still images and video to an internal memory and to an SD card (supplied). The CA350 has an ergonomic pistol grip design, large screen and one-hand controls including 2 x zoom function and 360° image rotation at 90° intervals. The CA350 also comes with an integrated speaker/microphone to aid inspection reports. Especially designed to reach and illuminate dark, hard to reach spaces with four bright LEDs.

- 3.5" Colour LCD Screen
- Removable camera cable
- Captures to internal memory & SD card (supplied)
- 4 fully adjustable LED's
- Image control: Zoom & Rotate
- Powered by a rechargeable lithium ion battery
- Integrated speaker & microphone
- Wi-Fi & BLUETOOTH capability (range 9m/5m)
- Accessory Kit: 45° Mirror, Magnet & Hook
- Supplied in blow molded carry case

#### Accessories

| Model No  | Description                       |
|-----------|-----------------------------------|
| 501-37108 | 3' Extension Cable (37108)        |
| 501-37113 | 6' Extension Cable (37113)        |
| 501-37098 | 6mm x 1m Camera Cable (37098)     |
| 501-37093 | 6mm x 4m Camera Cable (37093)     |
| 501-37123 | Accessory Kit (37123)             |
| 501-55198 | CA350 Recharging Station (55198)  |
| 501-55183 | CA350 Replacement Battery (55183) |

| Model No | Description                            |
|----------|--|
| 501-185  | RIDGID CA350 Inspection Camera (55903) |

### CA350X

The new micro CA-350x inspection camera with Wi-Fi and Bluetooth for instant image/video sharing and live second screen viewing.

- Easily record stills and videos of problems in hard to reach areas.
- Connect to a mobile device for a live second screen and instant file sharing of pictures and videos.
- Comfortable pistol grip design, large screen and best in class image quality and easy to use interface.
- Illuminate dark spaces with four bright LED's on the rugged aluminium 90cm imager head (extendable with optional cables up to 9 Mtrs)
- Wireless recording of audio commentary on video inspections with a Bluetooth headset

#### Specification

- Display - 3.5" TFT (320 x 240 Resolution)
- Camera Diameter - 17mm with 4 adjustable brightness LED's
- Cable Reach - 90cm (extendable with optional cables up to 9 Mtrs, also compatible with the microDrain, microReel and nanoReel).
- Image / Video: - JPG: 650 x 480, MP4: 640 x 480
- Wi-Fi, Bluetooth Range -- 9 Mtr / 5 Mtr
- Included micro CA-350x with 17mm imager, 12v Advanced Lithium Battery, 230v Fast Charger, USB cable, hook, magnet, mirror, RCA cable, AC adapter, headset with microphone, 8GB SD card, blow molded case.



#### Accessories

| Model No  | Description                       |
|-----------|-----------------------------------|
| 501-37108 | 3' Extension Cable (37108)        |
| 501-37113 | 6' Extension Cable (37113)        |
| 501-37098 | 6mm x 1m Camera Cable (37098)     |
| 501-37093 | 6mm x 4m Camera Cable (37093)     |
| 501-37123 | Accessory Kit (37123)             |
| 501-37088 | CA330 Recharging Station (37088)  |
| 501-55198 | CA350 Recharging Station (55198)  |
| 501-55183 | CA350 Replacement Battery (55183) |

| Model No  | Description                              |
|-----------|--|
| 501-63888 | RIDGID CA-350x Inspection Camera (63888) |

### NanoReel

The RIDGID NanoReel is designed to inspect boiler tubes, supply lines, sprinkler systems and a wide array of speciality applications where a small diameter and tight turn radius is required. The NanoReel captures images and video footage to an SD card using the supplied CA350 Inspection camera. If a larger screen is required the CS6 Monitor can be purchased. Interchangeable drums let the user change out the inner drum depending on the application. Ideal for 1/2" to 2" pipes.

- 15.5mm Camera Head
- 25m Reel
- 512Hz Sonde
- 2 x Ball Guides included
- Passes 90° bends from 30mm
- 3.5" Colour LCD screen (CA350)
- Lightweight & compact carry case

| Model No  | Description                     |
|-----------|---------------------------------|
| 501-77583 | RIDGID NanoReel + CA350 (56688) |



### MicroDrain APX

The RIDGID MicroDrain APX is designed to inspect toilet traps and 40mm P traps without the need to disassemble or dismantle any plumbing fixtures. A lightweight & compact unit with a durable and reliable construction the MicroDrain APX provides true accessibility, increased efficiency and reduced job time. Ideal for 1 1/2" to 3-4" pipes the MicroDrain APX will pass 90° bends in most 40mm lines.

- 22mm Camera Head
- 20m Reel
- 512Hz Sonde
- 2 x Ball Guides included
- Passes 90° bends from 40mm
- 3.5" Colour LCD Screen (CA350)
- Lightweight & compact carry case

| Model No  | Description                           |
|-----------|---------------------------------------|
| 501-77578 | RIDGID MicroDrain 20m + CA350 (77578) |

### MicroReel APX

The RIDGID MicroReel APX is the next step on from the MicroDrain. A longer, stiffer cable length and optional counter allows the MicroReel APX to inspect lines of 101/2" to 4-5" diameter up to 30m long. Multi-monitor compatibility with existing SeeSnake monitors or the CA350 camera along with its lightweight & compact design makes this unit the choice of professionals.

- 25mm Camera Head
- 30m Reel
- 512Hz Sonde
- 2 x Ball Guides included
- 3.5" Colour LCD Screen (CA350)
- Lightweight & compact carry case

| Model No  | Description                          |
|-----------|--------------------------------------|
| 501-70808 | RIDGID MicroReel 30m + CA350 (70808) |



## Compact 2 Range

SeeSnake Compact2, a trusted easy to use inspection system for many years is now available in additional versions. The SeeSnake Compact family additions (C40 and M40) with TruSense provide down pipe visibility, vastly improved with High Dynamic Range (HDR), giving more clearly defined details of the pipe characteristics. TiltSense displays the cameras pitch in a pipe on the connected SeeSnake CS6x Versa monitor, helping you to diagnose even the most difficult inspections, easier and more efficiently.

The Ridgid CS6x VERSA monitor with Wi-Fi docks onto the Compact series reels and provides a versatile all in one monitor system. Quickly adjust viewing angle in high or low position. Compatible with all SeeSnake reels.

|                     | SEESNAKE COMPACT M40    | SEESNAKECOMPACT C40           | SEESNAKE COMPACT 2            |
|---------------------|-------------------------|-------------------------------|-------------------------------|
| Ridgid Pt No        | 64213                   | 64208                         | 48118                         |
| Application         | Loner runs, fewer turns | Branch lines with tight turns | Branch lines with tight turns |
| Line Capacity       | 40mm to 200mm           | 40mm to 150mm                 | 40mm to 150mm                 |
| Camera head         | 25mm with TruSense      | 25mm with TruSense            | 25mm with TruSense            |
| Cable Length        | 40 Mtr                  | 40 Mtr                        | 30 Mtr                        |
| Cable Diametre      | 9.1mm                   | 6.7mm                         | 6mm                           |
| Minimum bend radius | 76mm                    | 64mm                          | 64mm                          |
| Sonde               | 512Hz                   | 512Hz                         | 512Hz                         |

## SeeSnake Compact C40 Camera System with TruSense

The SeeSnake Compact C40 provides digital recording monitoring with Wi-Fi, for fast, efficient job setup. Tilt monitoring allows you to view your monitor at your desired angle or remove it for convenient job site placement. Always nail the image with self-levelling camera technology. The TruSense technology features a high dynamic range image sensor with two-way communication between the camera and Seesnake.

- Quick-release dock for the CS6x Versa.
- Digital Recording Monitor with Wi-Fi provides fast, efficient job setup.
- Tilt the monitor to the desired viewing angle while docked or remove it for convenient job site placement.
- Self-Levelling Camera head provides an image that is always upright.
- TruSense technology features a high dynamic range (HDR) image sensor and two-way communication between the camera and SeeSnake CSx series Wi-Fi enabled monitors.
- HDR image sensor maintains colour and detail in high dynamic range scenes.
- TiltSense inclinometer shows camera's angle in-pipe on CSx series monitors.
- Download the free HQx Live app to view and record inspection jobs on your phone or tablet.
- Use the high power Flexmitter 512 Hz sonde with a RIDGID receiver to locate the camera.



**RIDGID**

## SeeSnake Compact M40 Camera System with TruSense

The Compact M40 offers similar performance to the SeeSnake Mini in the popular Compact form factor, combining a small package and all-in-one monitor capability. Now available with TruSense™ technology. The Compact M40 has 131' (40 m) of moderately stiff push cable, providing a good compromise between stiffness and the ability to navigate turns.

- Quick-release docking system for fast, efficient job setup with the SeeSnake CS6x Versa monitor.
- Sturdy metal frame provides a solid base that makes it easy to push and retrieve the cable.
- Powerful Flexmitter® sonde has long range and preserves the camera's ability to make turns.
- High dynamic range (HDR) image sensor offers bright, clear in-pipe imaging in difficult lighting conditions
- TiltSense displays the camera's angle in a pipe on a connected SeeSnake CSx series monitor.



**RIDGID**

## SeeSnake Compact2 with VERSA Camera System

SeeSnake® Compact 2 System packed with CS6x Versa monitor delivers big performance in a small package. The Compact 2 delivers 100' (30 m) of push cable with a 2.5" (63 mm) min bend radius. Self-levelling camera head provides an image that is always upright. Quick-release dock for the CS6x Versa Digital Recording Monitor with Wi-Fi provides fast, efficient job setup. Tilt the monitor to the desired viewing angle while docked or remove it for convenient jobsite placement.

- Quick-release docking system for fast, efficient job setup with the SeeSnake CS6x Versa monitor.
- Sturdy metal frame provides a solid base that makes it easy to push and retrieve the cable.
- Powerful Flexmitter® sonde has long range and preserves the camera's ability to make turns.
- The Compact 2 comes in the popular Compact formfactor, combining a small package and all-in-one monitor capability (when used with the SeeSnake CS6x Versa monitor).
- The Compact 2 has 100' (30 m) of flexible push cable, providing good ability to fit in smaller diameter pipes and navigate through tight turns.

| Model No | Description   |
|----------|---|
| 501-214  | RIDGID SeeSnake Compact2 + CS6x VERSA Monitor (48118) |

## SeeSnake®

### CS12x Digital Reporting Monitor with WiFi

The RIDGID® SeeSnake® CS12x Monitor delivers a large screen, dual battery functionality and Wi-Fi connectivity. Designed to help you work smarter, not harder on the job site.

#### Features

- Enhanced Connectivity - Stream or record inspections to an iOS or Android phone or tablet with the free HQx Live companion app.
- Storage Option - Capture images and video directly to a USB drive.
- Dual Battery Power - Two batteries can be installed to deliver maximum runtime at the job site.
- Large 12.1" Display - At 12.1" and with a resolution of 1024x768 pixels, the upgraded high contrast display is crisp, clear and daylight readable.
- More Powerful Processor - Delivers quick start-up time and snappy performance.

#### Specifications

- Weight (without battery) - 13.9 lb (6.3 kg)
- Dimensions (LxWxH) - 19.9" x 15.5" x 11.9" (506 x 394 x 302 mm)
- Power Source - 18V Advanced Lithium Battery or AC Adapter
- Operating Temperature - 14°F to 122°F (-10°C to 50°C)
- Storage Temperature - -4°F to 140°F (-20°C to 60°C)
- Display - 12.1" (307 mm) Color LCD
- Display Resolution - 1024 x 768 Pixels, XGA
- Video Format - MPEG4 (H.264) 30 FPS
- Photo Format - JPEG
- Autolog Format - MPEG4 (H.256) Variable Frame Rate
- Audio - Integrated Microphone and Speaker
- Transfer Method - USB Drive



### CS6x VERSA Digital Reporting Monitor with WiFi

Improving jobsite ergonomics, the CS6x Versa has high and low monitor mounting positions and a unique pivoting frame that lets users tilt the monitor to the desired angle for optimal viewing efficiency. This design allows the sunshade to remain open in all usage situations for maximum glare reduction.

#### Features

- The CS6x Versa has a 5.7" daylight viewable screen, direct USB recording, full TruSense™ compatibility, and Wi-Fi connectivity for remote viewing and recording on a phone or tablet.
- The frame docks to the Compact 2/C40/M40 and can be used mounted or unmounted.
- Pivoting frame with high and low mounting positions allow flexible placement and optimal viewing
- Docks to the Compact 2/C40/M40 camera reels for efficient transport, storage, and operation
- Operates on one 18 V battery or with the included AC power adapter
- Improved ingress protection against dust and moisture

#### Specifications

- Weight (without battery) - 2.2 kg (4.9 lb)
- Dimensions (L x W x H) - 332 x 233 x 309 mm (13.1" x 9.2" x 12.2")
- Power Source - 18 V Advanced Lithium Battery or AC Power Cable
- Operating Temperature - -10°C to 50°C (14°F to 122°F)
- Display - 145 mm (5.7") Color LCD
- Video Format - MPEG4 (H.264) 30 FPS
- Autolog Format - MPEG4 (H.264) Space saving frame rate
- PhotoTalk™ - MPEG4 (H.264) Single image with audio
- Photo Format - JPEG
- Audio - Integrated Microphone and Speaker
- Transfer Method - USB Drive
- IP-rating - IPx5 (excl. Batteries & AC Adapter)



RIDGID

## SeeSnake Standard Camera with TruSense

Down pipe visibility vastly improved with High Dynamic Range (HDR) giving more clearly defined detail of pipe characteristics. Rugged, high-intensity LEDs for exceptional viewing and long life. Self-leveling camera head keeps the image upright (certain models) Powerful FleXmitter® sonde has long range and preserves the camera's ability to make turns. High Dynamic Range (HDR) image sensor offers bright, clear in-pipe imaging in difficult lighting conditions TiltSense displays the camera's pitch in a pipe on a connected SeeSnake CSx series monitor.



- The SeeSnake Standard camera reel offers unmatched reliability and performance in a ruggedized package
- Now available with TruSense™ technology
- The Standard has the stiffest push cable and is available in lengths up to 325' (99 m) – making it perfect for long runs, particularly in larger pipes with fewer turns.
- Rugged, high-intensity LEDs for exceptional viewing and long life.
- Self-levelling camera head keeps the image upright.
- Powerful FleXmitter® sonde has long range and preserves the camera's ability to make turns.
- High dynamic range (HDR) image sensor offers bright, clear in-pipe imaging in difficult lighting conditions.
- TiltSense displays the camera's pitch in a pipe on a connected SeeSnake CSx series monitor.

| Model No  | Description  |
|-----------|--|
| 501-63583 | SeeSnake Standard Camera with TruSense 325', 35mm S/L Camera |
| 501-63603 | SeeSnake Standard Camera with TruSense 200', 35mm S/L Camera |

## Drain Inspection Camera with 512Hz Sonde

The system comes in its own storage box with a built-in LCD screen to review, monitor and record video footage in real-time. Video footage can be recorded directly onto a USB memory stick & Micro SD Card allowing for video footage to be both viewed, stored and played back. With a Video out facility recordings can also be made directly to a media player or other recording device. The systems comes with software which has a CODEC on to allow users to view video on a PC. Available in 20m and 40m lengths.

- 7" TFT LCD Screen
- Powered by Rechargeable battery pack or AC/DC Adaptor
- 23mm diameter camera head
- 512Hz Sonde
- Adjustable LED lighting
- Lighting 12 LED's
- Captures to USB or Micro SD card
- Remote control handset

| Model No | Description                            |
|----------|--|
| 507-151  | Drain Camera 23mm x 20m + 512Hz Sonde  |
| 507-152  | Drain Camera 23mm x 40m + 512 Hz Sonde |



### Accessories

| Model No | Description                                |
|----------|--|
| 507-132  | Replacement 20m Reel + M/C                 |
| 507-133  | Replacement 40m Reel + M/C                 |
| 507-150  | Replacement 23mm Camera Head + 512Hz Sonde |
| 507-155  | Replacement 90° View Camera Head           |
| 507-107  | Replacement Battery Pack                   |
| 507-108  | Monitor to Reel Cable 1m                   |
| 507-112  | Remote Control Handset                     |

## SeeSnake Mini Camera with TruSense

The SeeSnake Mini with TruSense provides down pipe visibility, vastly improved with High Dynamic Range (HDR), giving more clearly defined details of the pipe characteristics. The rugged, high-intensity LEDs provide exceptional viewing and longer life. The self-levelling camera head keeps the image upright (certain models) Powerful FleXmitter® sonde has long range and preserves the camera's ability to make turns. High Dynamic Range (HDR) image sensor offers bright, clear in-pipe imaging in difficult lighting conditions TiltSense displays the camera's pitch in a pipe on a connected SeeSnake CSx series monitor.

- The SeeSnake Mini camera reel is the smaller version of the SeeSnake Standard system
- Now available with TruSense™ technology
- The Mini's moderately stiff 200' (61m) push cable strikes a good balance between stiffness and the ability to navigate turns
- Rugged, high-intensity LEDs for exceptional viewing and long life.
- Self-levelling camera head keeps the image upright.
- Powerful FleXmitter® sonde has long range and preserves the camera's ability to make turns.
- High dynamic range (HDR) image sensor offers bright, clear in-pipe imaging in difficult lighting conditions
- TiltSense displays the camera's pitch in a pipe on a connected SeeSnake CSx series monitor.



| Model No  | Description  |
|-----------|--|
| 501-63628 | SeeSnake Mini Camera with TruSense 200', 30mm S/L Camera |



### Accessories

| Model No | Description                      |
|----------|----------------------------------|
| 507-132  | Replacement 20m Reel + M/C       |
| 507-133  | Replacement 40m Reel + M/C       |
| 507-134  | Replacement S/L 26mm Camera Head |
| 507-139  | Wheeled Skid                     |
| 507-155  | Replacement 90° View Camera Head |
| 507-107  | Replacement Battery Pack         |
| 507-108  | Monitor to Reel Cable 1m         |
| 507-112  | Remote Control Handset           |

## Self Levelling System

The system comes in its own storage box with a built-in LCD screen to review, monitor and record video footage in real-time. Video footage can be recorded directly onto a USB memory stick & Micro SD Card allowing for video footage to be both viewed, stored and played back. With a Video out facility recordings can also be made directly to a media player or other recording device. The systems comes with software which has a CODEC on to allow users to view video on a PC. Available in 20m and 40m lengths.

- 7" TFT LCD Screen
- Powered by Rechargeable battery pack or AC/DC Adaptor
- 26mm diameter Self Levelling camera head
- Adjustable LED Lighting
- Meter Counter
- Remote control handset

| Model No | Description                 |
|----------|-----------------------------|
| 507-130  | S/L Drain Camera System 20m |
| 507-131  | S/L Drain Camera System 40m |



### Dart Inspection Camera

The system comes in its own storage box with a built-in LCD screen to review, monitor and record video footage in real-time. Video footage can be recorded directly onto a USB memory stick & Micro SD Card allowing for video footage to be both viewed, stored and played back. With a Video out facility recordings can also be made directly to a media player or other recording device. The systems comes with software which has a CODEC on to allow users to view video on a PC. Available in 20m and 40m lengths.

- 7" TFT LCD Screen
- Powered by Rechargeable battery pack or AC/DC Adaptor
- 22mm or 12mm diameter camera head
- Adjustable LED lighting
- 12 LED's (22mm); 6 LED's (12mm)
- Captures to USB or Micro SD card
- Remote control handset

#### Accessories

| Model No | Description                  |
|----------|------------------------------|
| 507-102  | Replacement 22mm x 20m reel  |
| 507-103  | Replacement 22mm x 40m reel  |
| 507-104  | Replacement 22mm camera head |
| 507-105  | Replacement LCD screen       |
| 507-107  | Replacement battery pack     |
| 507-121  | Replacement 12mm x 20m reel  |
| 507-122  | Replacement 12mm x 40m reel  |
| 507-123  | Replacement 12mm camera head |
| 507-126  | 22mm Drain Camera Skid Set   |



| Model No | Description               |
|----------|---------------------------|
| 507-100  | Drain Camera 22mm x 20m   |
| 507-101  | Drain Camera 22mm x 40m   |
| 507-119  | Drain Camera 12mm x 20m   |
| 507-120  | Drain Camera 12mm x 40m   |
| 507-172  | Drain Camera 13.5mm x 20m |
| 507-173  | Drain Camera 13.5mm x 40m |

### Pan & Tilt System

The Pan & Tilt push rod Drain Camera system is available with a 60m or 120m frame and a control box with a built-in LCD screen to review, monitor and record video footage in real-time. Video footage can be recorded directly onto a USB memory stick & Micro SD Card allowing for video footage to be both viewed, stored and played back. With a Video out facility recordings can also be made directly to a media player or other recording device. The systems comes with software which has a CODEC on to allow users to view video on a PC.

- Pan & Tilt Camera Head 59mm dia
- 360° Pan & 180° Tilt movement
- 18 LED adjustable lighting
- 7" TFT LCD Monitor
- Meter Counter
- Powered by Rechargeable battery pack or AC/DC Adaptor
- Remote control handset



#### Accessories

| Model No | Description                 |
|----------|-----------------------------|
| 507-105  | Replacement LCD screen      |
| 507-107  | Replacement battery pack    |
| 507-412  | Replacement P&T Camera Head |



| Model No | Description                                |
|----------|--|
| 507-400  | P&T 60m Drain Camera System                |
| 507-400S | P&T 60m + 512Hz Sonde Drain Camera System  |
| 507-401  | P&T 120m Drain Camera System               |
| 507-401S | P&T 120m + 512Hz Sonde Drain Camera System |

### ATEX Rated Camera

- mC30 ATEX (Zone 1)
- Pipe diameter 32 – 100mm
- Bend capability from 50mm
- Colour camera head 29 mm with upright image certified according to II 2G Ex d b mb op is IIC T4 Gb
- Flexible push cable 30m (6.7mm dia)
- Location Sonde 33kHz / 512Hz
- Sunlight-readable, Anti-glare 5.6" monitor



#### mC30 Reel

- Reel made of Chrome-nickel steel & Carbon fibre
- Control unit with function keys for easy usage
- Stepless light control
- BNC Video Out
- Battery life 3 hours
- Internal power supply with 100 to 240V
- Camera KK29 (SL)
- Axial camera with high-resolution colour camera module
- With 29 mm diameter for pipes from 32mm
- Water resistant to 10 bar
- SL (Self levelling image)
- Monitor TFT5R
- 5.6" TFT-LCD monitor in 4:3 format, sunproof
- Digital storage of videos and photos on SD card

| Model No    | Description           |
|-------------|-----------------------|
| 500-EX10055 | mC-30 ATEX Camera 30m |

#### Accessories

| Model No | Description       |
|----------|-------------------|
| 507-423  | Borehole Lead Set |



### Deep Underwater Borehole Camera

The Deep Underwater Borehole Camera system comes with a control box with built-in 10" LCD screen to review, monitor and record audio & video footage in real-time. Video footage can be recorded directly onto the 128GB HDD or a USB device allowing for audio/video footage to be viewed, stored and played back. With a Video out facility recordings can also be made directly to a media player or other recording device. The LCD screen, camera and DVR can be powered either from the 12v rechargeable battery or from a UK plug adaptor. The Borehole camera is mounted on an electrical winch and can be deployed at a speed of 0 to 20m per minute. The unit comes with either 300m, 400m or 500m cable length. The system has a built-in WiFi transmitter which supports Android, iOS Smartphone and Tablet. This camera is rated waterproof to IP68 up to 50bar.

- Dual view mode Waterproof Camera
- IP68 Waterproof up to 50 bar
- 300m, 400m & 500m cable length
- Electric winch with adjustable winding speed
- 10" HD LED Monitor DVR with Audio/Video recording function
- Built-in 128GB Hard Disk drive

| Model No | Description               |
|----------|---------------------------|
| 507-420  | Deep Borehole Camera 300m |
| 507-421  | Deep Borehole Camera 400m |
| 507-422  | Deep Borehole Camera 500m |



## Mini DartEye



The DartEye Mini Pipeline Inspection Camera has been designed specifically with the user in mind. The system is versatile robust & easy to transport with the additional benefit of a detachable monitor and can be stood upright or laid down while being used or whilst in storage.

The DartEye Mini is available with 26mm Self-Leveling Camera Head, 30m cable length, 7 hour Battery Life with a Mains Power option and SD Card Recording. Lighting is supplied by 6 fully adjustable Ultra Bright LED lights. Ideal for 1 1/2" (38mm).

The DS100 Monitor has a 5mm Polycarbonate Protective Cover over the LCD screen to protect against any damage or accidental knocks. The Camera head is rated to IP 68 to 10bar. The complete system including Monitor weighs just 10Kgs.

- 5" TFT LCD Screen
- 25mm Fixed Camera or 26mm Self Levelling Camera Head
- Stainless Steel Construction
- High Impact Sapphire Lens
- Removable Monitor
- 30m Cable Length
- 7 Hour Lithium-Ion Battery Life
- AC Adaptor
- SD Card Recording
- 6 Ultra Bright LED Lights
- Battery Meter
- AV Out Socket

### Optional extras

- High output integral 33kHz Sonde
- Meter counter
- 10 page text editor
- Wi-Fi

| Model No | Description  | Camera Head        |
|----------|--|--------------------|
| 565-920  | Mini DartEye 30m   | 26mm Self Leveling |
| 565-921  | Mini DartEye 30m + Sonde + Counter                       | 26mm Self Leveling |
| 565-922  | Mini DartEye 30m + Sonde + Counter + Text Editor & Wi-Fi | 26mm Self Leveling |
| 545-645  | Mini DartEye 45m + Sonde + Counter + Text Editor & WiFi  | 26mm Self Leveling |



**Suitable for 1.5"-4" pipes**

### Accessories

| Model No | Description                   |
|----------|-------------------------------|
| 562-053  | DartEye Battery Charger 1 Amp |
| 565-040  | 2" Skid Ball                  |
| 565-050  | Vehicle Charger               |



## DX & DX HD S/L Inspection Systems

The DX and DX HD is a modular system with a wide variety of standard user-friendly features. The system is versatile robust and easy to transport with the benefit of a detachable monitor to allow for easy charging and viewing on site.

The DX includes more user-friendly options such as a larger TFT Screen, brighter LED lighting, large internal memory, WiFi Connectivity and USB memory storage.

The DX comes complete with Dart Full Reporting software which allows the user to complete a report whilst doing the survey at the site. The reporting software also allows the user to add numerous Sections and Observations to the report, include still images and video to the report and move from one site area to another without having to close the report. Available in lengths of: 40m, 60m, 80m & 120m.



- 10.1" sunlight readable TFT HD display (1280 x 800)
- Display protected by Gorilla Glass Front Panel
- Self-Levelling Camera Head
- Meter Counter (Mtr / Ft)
- Dart Full reporting software included
- USB 3.0 recording
- USB Memory stick supplied
- 128GB internal memory
- Records to internal / external or both memories
- Integral high power 3 Frequency Sonde (512Hz/640Hz/33kHz)
- Suitable for 2"-12" (50mm - 300mm) pipe diameter with suitable skids
- Optional 6" (150mm) Brush Skid & 9-12" (225mm - 300mm) Wheeled Skid



Dart Systems Ltd have produced a High Definition Self Levelling Camera Head for the DX Inspection System.

### Specification

- Stainless steel construction
- High impact Sapphire lens
- Diameter 46mm
- Self-levelling HD camera head
- Ultra-bright LED lighting
- Colour Sony CCD Sensor - 1080p
- Environmental rating IP68 to 10bar

| Model No         | Description              |
|------------------|--------------------------|
| 569-900          | DX Camera System 40m     |
| 569-901          | DX Camera System 60m     |
| 569-902          | DX Camera System 80m     |
| 569-903          | DX Camera System 120m    |
| <b>HD System</b> |                          |
| 569-900HD        | DX HD Camera System 40m  |
| 569-901HD        | DX HD Camera System 60m  |
| 569-902HD        | DX HD Camera System 80m  |
| 569-903HD        | DX HD Camera System 120m |





### Skids

**4" 2 part Ball Skid** for the 'DX' Drain Inspection Camera system. Enables the Camera to be pushed easily through 4" pipes. Attaches around the Camera head and screwed together for security (for 54mm camera head).

| Model No | Description                  |
|----------|------------------------------|
| 568-012  | 4" Ball Skid for 36mm Camera |

**6" Brush Skids** for the 'DX' Drain Inspection Camera system. The 2 part Skid is inserted onto the 'DX' unit (1 is pushed up and sits over the camera Head and the other one sits over the hose end) which then enables the 'DX' Drain Camera system to be used in 6" pipes. Easy to attach and remove, no tools required. Extremely robust and long lasting (for 36mm camera head).

| Model No | Description       |
|----------|-------------------|
| 568-711  | 6" Brush Skid Set |

**Large Wheeled Skid** for the 'DX' Drain Inspection Camera system. This Skid is inserted onto the 'DX' unit and pushed up and around the camera head which then enables the 'DX' Drain Camera system to be used in 9"-12" pipes. Easy to attach and remove, no tools required. Extremely robust and long lasting (for 54mm camera head).

| Model No | Description         |
|----------|---------------------|
| 568-711  | 9"-12" Wheeled Skid |



### DX Mini Pipeline Inspection Camera

Dart DX Mini Pipeline Inspection Camera For pipe inspection up to 100mm (4") The DX Mini Pipeline Inspection Camera has been designed specifically with the user in mind. The system is versatile robust & easy to transport. The DX Mini can be used in conjunction with the DX Push Rod or with a standalone DS200i Control unit. The DX Mini comes as standard with a 26mm diameter camera head, 30m cable length (optional 45m). Lighting is supplied by 6 fully adjustable Ultra Bright LED lights. The Camera head is rated to IP 68 to 10bar. Ideal for 1½" (38mm) to 4" (100mm) pipes and the unit is supplied with a 50mm diameter skid. This system is designed for use with the DX controller DS200i, to allow complete flexibility with inbuilt WiFi Connectivity allowing you to create a complete PDF report on-site, saving you time and ensuring accuracy and efficiency. The compatible controller has a 10.1" sunlight readable TFT HD display, 1280 x 800 protected by Gorilla Glass front panel, Meter counter (Mtr/Ft), USB 3.0 recording, external USB memory stick and 128Gb internal memory. The system excluding monitor weighs just 7.5Kgs.

#### Applications include:

- 26mm dia Camera Head
- Stainless Steel Construction
- High Impact Sapphire Lens
- 6 Ultra Bright LED Lights
- 30m or 45m Rod Length
- High Output Integral 512Hz, 640Hz or 33kHz Sonde
- Meter Counter (Mtrs or Ft)
- Reel Brake



| Model No | Description      |
|----------|------------------|
| 569-961  | DX Mini Reel 30m |
| 569-962  | DX Mini Reel 45m |

### DX miCro Inspection Camera

The DX miCro is ideal for small drain/pipe inspection (15mm to 80mm diameter) with plenty of features in a small portable unit. The DX miCro camera is designed to reach even the most difficult-to-reach places, even the tightest spaces and saving costly disassembles. Tubes, cavities, welding seams, turbines, hollow profiles and castings. The 13mm diameter Stainless Steel camera head inspects these easily. At the same time, the cameras are so robust that they can easily withstand the harsh field conditions. In this way you locate all surface damages, cracks, sediments and deteriorations with minimal effort. The 5mm push rod and spring enables the system to navigate most buildings internal pipework and with a locatable multifrequency Sonde and meter counter the camera head location can be pinpointed easily to ensure problems can be resolved quickly. Passes 90° bends in 25mm pipe. Unit is controlled with the function keys on the front panel which include adjustable lighting. The DX miCro is powered by Internal Battery and gives approximately 3 working hours use before charging required and works direct from the mains. Video & still images are captured to an SD card and can be connected direct to a laptop via USB. Optional Wi-Fi Module available to work in conjunction with the Dart Viewer App.



- Cable Length: 15m
- Cable diameter: 5mm
- Camera head diameter: 13mm
- Field of View: 84°
- Pipe Diameter range: 15-80mm
- Monitor: 5" TFT Colour
- Meter Counter: Ft/Mtr
- Location Sonde: 33kHz/512Hz/640Hz (switchable)
- System Weight: 3.5kgs
- Waterproof: Up to 1bar

| Model No          | Description            |
|-------------------|------------------------|
| 500-11000315      | DX miCro               |
| 500-11000315-WIFI | DX miCro + WiFi Module |

| Accessories  |                            |
|--------------|----------------------------|
| Model No     | Description                |
| 500-11000063 | WiFi Module (Retrofitable) |
| 500-10001774 | Soft Padded Carry Bag      |
| 500-10001759 | minLoc 512Hz Locator       |
| 500-10001775 | DX miCro Hard Case         |
| 500-10001760 | 12v Adaptor                |

### DX miCro+ Inspection Camera

Enables a completely non-destructive inspection of pipes and many other small difficult to reach areas. Expensive dismantling is no longer necessary. Discover surface damage, cracks, deposits, and wear and tear with the least amount of effort.

- Anti-glare 7" display in robust hand cable drum
- Meter counter
- Bends from 25 mm or 40mm
- Colour camera head 13 mm or 18mm
- Flexible push cable 30m
- Transport protection for display
- Carrying strap
- Weight approx. 7 kg

#### Two Options Available:

- DX miCro + (KK13)**
- Pipe diameter 15-80 mm
  - Flexible 30 m push-pull cable with KK13mm camera
  - Bends capable from 25 mm
  - Location sonde with 33kHz/512Hz/640Hz
  - Optional WiFi Module with text generator



- DX miCro + (KK18)**
- Pipe diameter 25-125 mm
  - Flexible 30 m push rod 5.6 mm with KK18mm camera
  - Bends capable from 40 mm
  - Location sonde with 33kHz/512Hz/640Hz
  - Optional WiFi Module with text generator

As part of the Rausch International Group (RIG) Dart Systems supplies a range of Push Rods, Crawlers, Cutters and UV lighting Rehab equipment to the UK market. Crawler range is from 50mm up to 3000mm.

<https://www.rauschtv.com/en/products/Rausch-basic>

## Rausch Basic



### Omicron Push

- Rausch-Tab
- Pan and tilt head camera: KS 40, KS 60
- Axial view camera: SAT 42 with horizontal picture
- Up to 80 m push cable
- Path length measurement in mm resolution
- Expandable with LATRAS for pipeline route measurement
- Determining the diameter
- Continues internal pressure check



### Omicron Drive

- Rausch-Tab
- Crawler FW 90 with camera KS 40, KS 60
- Up to 200 m camera cable
- Manual guidance
- Crank handle
- Path length measurement in mm resolution
- Continues internal pressure check

## Rausch Mobile

### Cubix 300

- Rausch-Tab
- Electric cable drum with up to 300 m camera cable
- Control panel with status display
- Foil buttons for the operation from the rear area
- Electric and manual brake
- Remote control
- Cross guide spindle and folding arm
- Continues internal pressure check
- Option: Radio remote control



## Rausch Comfort



### Elka 600 HD

- Rausch-Tab
- Cable drum with up to 300m camera cable
- Specially developed for the VML technology
- Full-HD video transmission
- Cooper cable without fibre optics
- Working spotlight
- Monitor
- Cable remote control
- Cross guide spindle
- Telescopic swivel arm and chain winch
- Continues internal pressure check
- Option: Radio remote control

## Rausch Crawler + Cameras



### Crawler FW 90

- 100-600mm
- 3 drive axles
- Manual/automatic steering function
- Continuously adjustable automatic reversing mechanism
- Camera quick connect
- Mechanical camera high adjustment
- Continues internal pressure check

### Camera KS 60

- 100-600 mm
- Pan and tilt camera
- Full HD quality: 1920 x 1080 Pixel
- Manual and automatic focus control
- 2 laser diodes for measurement
- Multiple zoom
- Integrated positioning: 33 KHz and 512 Hz
- Integrated 3D-Sensor
- Continues internal pressure check
- Option: LATRAS

### Crawler FW 135

- 135-1600 mm
- Extension with Lafette up to 3000 mm or 118"
- Manual/automatic steering function
- Continuously adjustable automatic reversing mechanism
- Camera quick connect
- Electric lifting gear
- Rear view camera
- Tilt sensor
- Temperature measurement
- Continues internal pressure check
- Option: M-Series

### Crawler KS 135

- 135-3000mm
- Pan & Tilt camera
- HD quality: 1920 x 1080 Pixel
- 2 laser diodes for precise measurement
- Zoom: 10x optical
- Wireless additional lighting
- Option: variable camera head turning speed for deformation measurement
- Lens with automatic diaphragm, auto focus, manual focus
- Continues internal pressure check

## Rausch Rehab

**WE ARE UNIQUE. WORLDWIDE.** Rausch Rehab has made a quantum leap in the technology of trenchless sewer rehabilitation. The expert in innovative technologies for UV curing in sewer rehabilitation and milling robotics.

### RRC1 Milling Robot

THE RRC1 Milling Robot. The perfect solution for converting and maintaining the underground infrastructure!



- Daylight readable 12" Touch display
- Integrated PC
- Operating System: Windows 10
- Full HD Camera
- Pipe Dia's 200-800mm
- Electric Motor (power up to 2.5kW)
- Endless circling of the arm
- Rear view camera
- Fully automatic cable drum up to 300m
- Easy to install in the vehicle

#### Accessories

- Wheelset 200-800mm
- Adaptation Top Hat System
- Camera Extension
- Adaptation High Pressure Nozzle

### UV Systems (UV Curing Systems)

The innovative UV systems developed by Rausch Rehab for curing GRP liners, the intensity measurement system for UV lamps, prophylactic quality assurance, scientifically supported further development and the precise milling robots promise sewer rehabilitation of the highest quality.



Intensity Measurement Kit RRCure INT02

#### INTENSITY METER CASE RRCure INT02

The present system measurement technology was developed for quality analysis and measuring individual UV lamps used in the field of UV light-curing sewer rehabilitation.

The following measurements are possible:

- Test option A**  
Absolute measuring by integrated electronic ballast, 400 to 1200 watts
- Test option B**  
Measuring the light source powered directly by the UV vehicle.
- Test option C**  
Measuring external emitters of UV cores



RRCure 100

### RRCURE 100

Self-sufficient UV light curing system, e.g as an add-on for rehabilitation measures difficult to access or complete the existing fleet of UV systems.

- DN 100-300/350 (with LQ 100 / 300)
- DN 150-600 (with LQ 150 / 650)
- Cable length: 120 m
- UV lamp power: 6 x 400/600 Watts

#### RRCure 100MH

- DN 800-2000 vertical

#### RRCURE 1500 COMPACT

- DN 150-1500

#### RRLQ 150/600

- Radial lamp train - DN 150-650

Or

#### RRLQ 1500

- Radial lamp train - DN 700-1500

#### RRCURE 2000 / TRUCK

UV light curing system designed for vehicle conversion.

- RRCure 2000 / Truck - 250 - 300 m cable
- DN 150-2000

#### RRLQ 150/600

Or

#### RRLQ 1500

Or

#### RRLQ 2000 EXT Core

#### RRLQ MH HYBRID

Can be used with all UV light curing systems on the market. Corresponding necessary adapters are available.

#### RRLQ MH Hybrid

- DN 800-1200 + vertical / depending on system capacity



RRLQ 150-600



RRCure 100MH

## Gun Barrel Inspection Camera - Artillery



**Applications:**

- 105mm L118 Light Gun
- 120mm Main Battle Tank
- 155mm AS90 Self-propelled Gun

**Secondary applications:**

- Bore Hole
- Utility Inspection

**Specifications:**

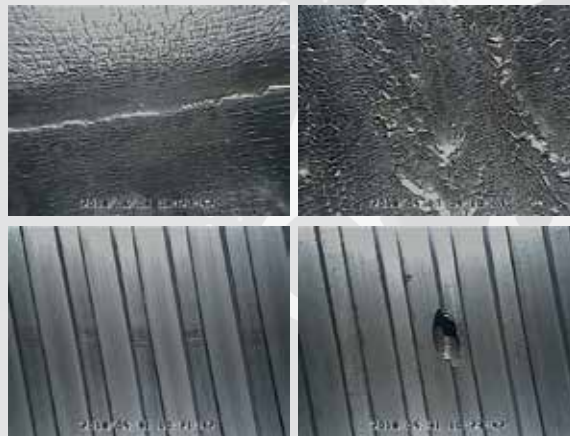
- Viewing Distance from 20mm
- Telescopic Pole 1.2 - 4mtr
- Waterproof Camera Housing rated to IP67 Camera
- 5" Colour LCD monitor
- Extremely low discharge Lithium Ion battery
- Main battery with up to 8 hours continual use from full charge in complete darkness, or 8 hours continuous use in daylight
- Operational weight less than 2.5Kgs

**Gun Barrel System comprises:**

- 5" Colour Dual View Monitor
- Telescopic Pole 1.2 - 4mtr
- Dual Head Camera system and skid
- Camera Skid
- Charger and Leads
- Camera Head Case & System Case

| Model No | Description   |
|----------|---|
| 566-911  | GBC 90mm Full Kit   |
| 566-913  | DS100 Inspection System, 105mm Gun Barrel<br>NSN No 4933-99-872-2363  |
| 566-914  | DS100 Inspection System, 120mm Gun Barrel                             |
| 566-915  | DS100 Inspection System, 155mm Gun Barrel<br>NSN No. 4933-99-350-2702 |
| 566-940  | GBC 40mm Full Kit   |
| 566-976  | GBC 76mm Full Kit   |

The Gun Barrel Inspection camera system designed for the inspection large bore artillery barrels. The system can be configured to suit most diameter systems. Currently available in 105mm, 120mm & 155mm for use with Light Towed Field Gun, Challenger Tank and AS90 Armoured self-propelled artillery. The system provides a forward view camera and a side view colour (White LED) camera, the camera heads can be switched between views to identify damage, Verdigris or copper deposits on the rifling of the gun barrel. The DS100 5" Colour Dual View Monitor Module provides a fully waterproof ruggedized viewing and recording console allowing video or still image capture onto SD card (up to 32GB). The Dual View monitor provides picture-in-picture for precise location of damage in a barrel. Deployed using a telescopic carbon fibre hybrid pole system which is extendable from 1.2 Mtrs to 4 Mtrs. The system is shipped in waterproof ruggedized Nanuk cases. NATO Stock Numbers are available for the Inspection Kits and all spares.



Examples of gun barrel damage identified

**NATO Approved.** NATO Stock Numbers are available for the Inspection Kits and all spares.



## SECA Pole Camera

Now available with black light 940nm Infra-Red LED's



| Accessories |                                   |
|-------------|-----------------------------------|
| Model No    | Description                       |
| 561-902     | Short Cable Lead                  |
| 561-903     | Long Cable Lead                   |
| 561-916     | DS100 Neck Strap Bracket Assembly |
| 561-904     | DS100 Monitor battery charger     |

The new SECA DS100 Telescopic Pole Camera System is a portable rugged inspection system designed for the Border Agencies, Security Industry, Utilities and Emergency Services. The DS100 can be a Pole mounted or free-standing system allowing the operator complete flexibility of movement whilst carrying out searches or surveillance. The Battery pack provides up to 8 hours of constant use and multiple packs can be carried for continual shift work. The Infra Red Camera provides clear high resolution colour images in daylight and switches to infra-red in low light to provide clear black and white images at distances up to 50ft. Articulation can be achieved manually by adjusting the camera head or by placing the camera head against a fixed object and pushing or pulling the head to the desired angle. This is a real benefit when carrying out room/container searches as the camera doesn't need to be collapsed to carry out a full search. The system is available in two extended lengths of either 2.5m or 4m.

- Camera Field of View 90°
- Collapsed lengths 0.85m or 1.2m, Extended length 2.5m or 4m
- Light Source White LED
- 5" TFT Screen
- 8 Hour battery life on 1 charge
- Waterproof to IP68
- SD Card Recording
- Supplied in Padded Shoulder bag and hard carry case

| Model No    | Description   |
|-------------|---|
| 561-PC2.5/A | Telescopic Pole Camera 2.5m IR 850nm, 240° Articulation |
| 561-PC2.5/B | Telescopic Pole Camera 2.5m IR 940nm, 240° Articulation |
| 561-PC2.5/C | Telescopic Pole Camera 2.5m IR 850nm, 110° Articulation |
| 561-PC4/A   | Telescopic Pole Camera 4m IR 850nm, 240° Articulation   |
| 561-PC4/B   | Telescopic Pole Camera 4m IR 940nm, 240° Articulation   |
| 561-PC4/C   | Telescopic Pole Camera 4m IR 850nm, 110° Articulation   |

## Cavity Camera

The Dart Cavity Inspection Camera will provide a high specification solution to Cavity Inspection. The system will allow for in-depth inspections and surveys of cavity wall voids with the capability to take high quality video & stills of the selected area. Utilising a 5" LCD High resolution screen coated with an anti-glare coating to aid use in sunlight, the system will provide a safer, user friendly solution than the traditional optical viewing systems. With high intensity LED lighting the system will be capable of providing light up to 1.5m depending on the cavity depth. The Camera probe can be inserted through 12.5mm drilled holes in brickwork when using the Insertion Tube, but can be inserted through 10mm dia holes if necessary. Suitable applications include Cavity Wall inspection, wall tie & dry rot inspection, pest control, boat surveys and many more where a rigid side-view endoscope is required.



| Accessories |                                   |
|-------------|-----------------------------------|
| Model No    | Description                       |
| 563-002     | Cavity Probe 90° only             |
| 561-902     | Short Curly Cable Lead            |
| 561-903     | Long Curly Cable Lead             |
| 561-916     | DS100 Neck Strap Bracket Assembly |
| 561-904     | DS100 Monitor battery charger     |

- 5" TFT High Res Screen
- SD Card Recording (MPEG & JPG)
- 2 High Intensity LED Lights
- Powered by Lithium-Ion rechargeable battery

| Model No | Description                        |
|----------|------------------------------------|
| 563-002  | Cavity Inspection Camera 90° Probe |

## Probe

### 90° Probe

This is a replacement Cavity Inspection Camera probe with 90° view. This probe is ideal for cavity inspection, inspecting wall ties etc when used in conjunction with the DS100 Monitor.

- 9.5mm probe diameter
- 270mm probe working length
- Field of View 60°



| Model No | Description           |
|----------|-----------------------|
| 563-002  | Cavity Probe 90° only |

## Neck Strap Bracket

This is a holder for the DS100 Monitor which allows the user to free up both hands. Very useful if up a ladder or abseiling or any application where the user would prefer to have both hands free.

| Model No | Description                      |
|----------|----------------------------------|
| 561-916  | DS100 Monitor Neck Strap Bracket |





### Chimney Camera

A professional, compact and highly portable camera system for use in chimneys, ducts and pipes. The system is supplied in a ruggedized plastic transit case for safe, secure transportation and weighs only 4.5kg. The camera head is supplied with a mounting bracket and fitted enabling the angle of the camera head to be adjusted dependant on the duct being inspected. The mounting bracket is secured to traditional chimney brushes, either ahead of the brush for a forward view or behind the brush head for a trailing view. The system is also supplied with 25 Mtrs of flexible trailing cable on an easy carry reel. The camera head provides a wide 90° Field of View angle and has built in infra-red illumination providing high resolution black and white images and outstanding picture quality.

- 5" TFT Screen
- SD Card recording
- 65mm Diameter Camera head
- Chimney Brush mounting bracket
- Powered by rechargeable Lithium-Ion battery
- Supplied in hard carry case

| Model No    | Description         |
|-------------|---------------------|
| 561-DS100CC | SECA Chimney Camera |

| Accessories |                                   |
|-------------|-----------------------------------|
| Model No    | Description                       |
| 561-916     | DS100 Neck Strap Bracket Assembly |
| 561-904     | DS100 Monitor battery charger     |



### Drop Hole/Bore Hole Camera

A professional, compact and highly portable camera system for use in bore holes, ducts, pipes and anywhere where the user needs to drop a camera to view. The system is supplied in a ruggedized plastic transit case for safe, secure transportation and weighs only 4.5kg. Supplied ready to work. The system is also supplied with 25mtrs, 50mtrs, 75mtrs or 100mtrs of flexible trailing cable on an easy carry reel. The camera head provides a wide 90° Field of View angle and has built in infra-red illumination providing high resolution black and white images and outstanding picture quality. The DS100 monitor unit has an SD Card Recorder (32GB capacity) to enable recording of still images and video.

- 5" TFT Screen
- SD card recording
- 65mm Diameter camera head
- Powered by rechargeable Lithium-Ion battery
- Supplied in hard carry case

| Model No       | Description                |
|----------------|----------------------------|
| 561-DS100DC    | SECA Drop Hole Camera 25m  |
| 561-DS100DC50  | SECA Drop Hole Camera 50m  |
| 561-DS100DC75  | SECA Drop Hole Camera 75m  |
| 561-DS100DC100 | SECA Drop Hole Camera 100m |

| Accessories |                                   |
|-------------|-----------------------------------|
| Model No    | Description                       |
| 561-916     | DS100 Neck Strap Bracket Assembly |
| 561-904     | DS100 Monitor battery charger     |



### HV Wireless Camera

The SECA DS100-DM Wireless Camera system has been designed to allow inspections to be carried out on overhead structures and infra-structure or for wireless remote viewing. The Camera and Monitor work wirelessly (no cables) which allows the camera head to be connected to a range of poles or fixtures for remote viewing of the images up to a range of 50 Mtrs. The Camera module has a universal mount allowing for the quick fitting and removal of industry standard Fibre Glass HV test poles (available in 1.2 Mr combinable lengths). When used with approved test poles the system allows for the safe inspection of overhead power cables and infrastructure. Adapters are available to fit the camera head to a range of telescopic or standard poles, specialist spikes or clamps if required. The DS100-DM (Dual Monitor) can also be used to connect both a hard wired camera and wireless camera allowing for picture in picture or switchable between both interfaces. This also allows the DS100-DM to be used with the existing SECA camera range comprising of forward and side view cavity probes, drop cameras, telescopic pole cameras and drain inspection cameras.

- 5" LCD Screen
- SD card recording
- Waterproof rating IP57
- 36 x IR LED's
- Powered by rechargeable Lithium-Ion battery
- Supplied in hard carry case



| Accessories |                              |
|-------------|------------------------------|
| Model No    | Description                  |
| 564-204     | Glass Fibre 1.2m Rod (Top)   |
| 564-205     | Glass Fibre 1.2m Rod (Inter) |



| Model No | Description                               |
|----------|---|
| 564-900  | HV Wireless Pole Camera                   |
| 561-300  | Black padded carry Bag to the accessories |
| 561-916  | DS100 Neck Strap Bracket Assembly         |
| 561-904  | DS100 Monitor Battery Charger             |





### ME LCD Endoscopes

This Palm sized LCD Monitor style Endoscope is equipped with a LED light source, TFT Display, camera and recorder, in a compact package allowing work to be carried out quickly and easily, without the need for separate laptops / monitors or other recording systems. It also enables team discussion while outputting the image to a TV monitor, and allow better communication with the customer. The 2GB memory card can hold over 15000 photos and you can organise and mail these photos as a working report on a desktop computer after they are transferred through the USB cable. The ME handset has many useful functions to aid clear and precise reports.

- Snap-shot function - allows the user to take a still image while recording or replaying video.
- Screen image rotation - allows the user to rotate the image in 4 directions: 90°, 180°, 270° and 360°.
- Zoom-in/Zoom out - allows the user to zoom in/out up to 2X.
- Photo Comparison - allows the user to see the difference between 2 photos at the same time without having to download to computer to view.
- Magnetic strips - allows the user to stick the handset against a metal surface freeing up his hand.
- 3.5" TFT LCD Screen
- Powered by rechargeable Li-Polymer battery
- Supplied in Aluminium Carry Case

| Model No | Description              |
|----------|--------------------------|
| 506-910  | ME LCD Endoscope Handset |

### ME Endoscope Cables



| Accessories |                      |
|-------------|----------------------|
| Model No    | Description          |
| 506-M35-3   | 3.9mm dia 35° Mirror |
| 506-M35-3   | 3.9mm dia 45° Mirror |
| 506-M35-3   | 3.9mm dia 55° Mirror |
| 506-BG-3    | 3.9mm dia Ball Guide |
| 506-MAG-3   | 3.9mm dia Magnet     |
| 506-M35     | 5.5mm dia 35° Mirror |
| 506-M35     | 5.5mm dia 45° Mirror |
| 506-M35     | 5.5mm dia 55° Mirror |
| 506-902     | 5.5mm dia Ball Guide |
| 506-MAG     | 5.5mm dia Magnet     |

The ME LCD Endoscope handset has a large range of Flexible, Rigid & Articulating (Steerable) cables as accessories for this system. Each cable is designed for different applications so the user can have one handset and interchange cables as the job requires.

- 4 bright LED lights
- Waterproof to IP67
- Flexible/Obedient 5.5mm dia cables in 1m to 30m lengths
- Flexible/Obedient 3.9mm dia cables in 1m to 20m lengths
- Flexible 90° viewing cables available in 1m to 30m lengths
- Rigid probes in 4mm dia x 12" & 17" lengths
- 90° Mirror tube with rigid probes
- Articulating cables in 5.5mm x 1m, 2m, 3m, 5m, 6m and 7m lengths

#### 3.9mm dia Flexible Cables

| Model No    | Description              |
|-------------|--------------------------|
| 506-EXT1-3  | 3.9mm x 1m Camera Cable  |
| 506-EXT2-3  | 3.9mm x 2m Camera Cable  |
| 506-EXT3-3  | 3.9mm x 3m Camera Cable  |
| 506-EXT5-3  | 3.9mm x 5m Camera Cable  |
| 506-EXT10-3 | 3.9mm x 10m Camera Cable |
| 506-EXT20-3 | 3.9mm x 20m Camera Cable |

#### 5.5mm dia Flexible Cables

| Model No  | Description              |
|-----------|--------------------------|
| 506-EXT1  | 5.5mm x 1m Camera Cable  |
| 506-EXT2  | 5.5mm x 2m Camera Cable  |
| 506-EXT3  | 5.5mm x 3m Camera Cable  |
| 506-EXT5  | 5.5mm x 5m Camera Cable  |
| 506-EXT10 | 5.5mm x 10m Camera Cable |
| 506-EXT20 | 5.5mm x 20m Camera Cable |
| 506-EXT30 | 5.5mm x 30m Camera Cable |

#### 3.9mm Rigid Probes

| Model No  | Description                                   |
|-----------|---|
| 506-RT412 | 3.9mm dia x 12" rigid probe + 90° mirror tube |
| 506-RT417 | 3.9mm dia x 17" rigid probe + 90° mirror tube |

#### Articulating Cables

| Model No   | Description                   |
|------------|-------------------------------|
| 506-A-EXT1 | 5.5mm x 1m Articulating Cable |
| 506-A-EXT2 | 5.5mm x 2m Articulating Cable |
| 506-A-EXT3 | 5.5mm x 3m Articulating Cable |
| 506-A-EXT5 | 5.5mm x 5m Articulating cable |
| 506-A-EXT6 | 5.5mm x 6m Articulating cable |
| 506-A-EXT7 | 5.5mm x 7m Articulating cable |

#### 5.5mm dia Flexible Cables with 90° Camera

| Model No     | Description                  |
|--------------|------------------------------|
| 506-EXT1/90  | 5.5mm x 1m Camera Cable 90°  |
| 506-EXT2/90  | 5.5mm x 2m Camera Cable 90°  |
| 506-EXT3/90  | 5.5mm x 3m Camera Cable 90°  |
| 506-EXT5/90  | 5.5mm x 5m Camera Cable 90°  |
| 506-EXT10/90 | 5.5mm x 10m Camera Cable 90° |
| 506-EXT20/90 | 5.5mm x 20m Camera Cable 90° |
| 506-EXT30/90 | 5.5mm x 30m Camera Cable 90° |

## VJ-ADV 2.8mm Videoscope



The VJ-ADV is an advanced all-in-one unit from R F Systems that combines an articulating video borescope with an on-board imaging system. The VJ-ADV retains all the functionality of the VJ-STR but has improved the visual display output with a 3.5" TFT monitor. Voice recording is now possible with the VJ-ADV by connecting the hands free microphone, audio annotation of the inspection can be recorded along with the video. Playback of audio is also possible through the microphone earpiece.

The 4 super bright high intensity LEDs that illuminate the camera tip can be easily adjusted to one of four different brightness levels, or they can be turned off. This feature prevents light washout and helps to always provide a clear image. With a cable diameter of only 2.8mm this is one of the smallest diameter articulating Videoscopes on the market. The unit delivers precise control of the articulating tip through the use of a thumb-activated joystick. This joystick responds to the slightest movement of your thumb and allows full movement of the camera tip 90° in all directions. Combined with a trigger-activated image capture button and thumb-activated video recording button, the joystick allows easy one handed control of all key functions.

The rigid end of the bending section is only 12mm long. This short rigid section aids in navigating the insertion tube through curved or complicated structures.

- 2.8mm dia 4-way articulating cable
- Working length: 1m
- Articulating angle: over 90° in each direction
- 3.5" Colour TFT Screen
- SD card recording
- Voice recording function
- Powered by DC Power adapter or 4 x AA batteries

| Model No | Description                  |
|----------|------------------------------|
| 520-110  | VJ-ADV 2.8mm x 1m Videoscope |

## VJ-ADV 3.9mm Videoscope



The 3.9mm VJ-ADV all-in-one unit from R F Systems that combines an articulating video borescope with an on-board imaging system. The intuitive control panel allows you to review stored images and video on the 3.5" TFT monitor. Voice recording is now possible by connecting the hands free microphone, audio annotation of the inspection can be recorded along with the video. Playback of audio is also possible through the microphone earpiece.

The 6 super bright high intensity LEDs that illuminate the camera tip can be easily adjusted to one of four different brightness levels, or they can be turned off. This feature prevents light washout and helps to always provide a clear image.

The unit delivers precise control of the articulating tip through the use of a thumb-activated joystick which responds to the slightest movement of your thumb and allows full movement of the camera tip 90° in all directions. Combined with a trigger-activated image capture button and thumb-activated video recording button, the joystick allows easy one handed control of all key functions.

The rigid end of the bending section is only 13mm long. This short rigid section aids in navigating the insertion tube through curved or complicated structures.

- 3.9mm dia 4-way articulating cable
- Working length: 1.5m & 3m
- Articulating angle: over 90° in each direction
- 3.5" Colour TFT Screen
- SD card recording
- Voice recording function
- Powered by DC Power adapter or 4 x AA batteries

| Model No | Description        |
|----------|--------------------|
| 520-120  | VJ-ADV 3.9mm x 1.5 |
| 520-121  | VJ-ADV 3.9mm x 3m  |

## VJ-ADV 6.9mm Videoscope



| Accessories |                                |
|-------------|--------------------------------|
| Model No    | Description                    |
| 520-155     | 90° Mirror attachment          |
| 520-156     | Lens Cap protector (Pack of 3) |

The 6.9mm VJ-ADV all-in-one unit retains all the functionality of the VJ-STR but has improved the visual display output with a 3.5" TFT monitor. The VJ-ADV also features a 2X Digital zoom, a single control panel button switches the on-board display to a 2X digital zoom, allowing the operator a clearer picture where it is not possible to get any closer with the insertion probe.

A temperature sensor located at the tip of the insertion tube measures and displays the internal temperature of the camera module, and delivers a two stage visual warning to the user. The warning system helps prevent damage to the scope from overheating the camera and electronics.

Voice recording is now possible with the VJ-ADV by connecting the hands free microphone, audio annotation of the inspection can be recorded along with the video. Playback of audio is also possible through the microphone earpiece. The 4 super bright high intensity LEDs tip can be easily adjusted to one of four different brightness levels, or they can be turned off. This feature prevents light washout and helps to always provide a clear image. There is now also a flash option which will deliver a 0.1 second burst of super high intensity light through the 4 LED's allowing you to take a photo of an especially dark area, such as a large diameter pipe. Similar to a flash on a camera, it illuminates the target long enough to capture a clear image.

The joystick responds to the slightest movement of your thumb and allows full movement of the camera tip 90° in all directions. Combined with a trigger-activated image capture button and thumb-activated video recording button, the joystick allows easy one handed control of all key functions.

- 6.9mm dia 4-way articulating cable
- Working length: 1.5m, 3m & 5m
- Articulating angle: over 90° in each direction
- 3.5" Colour TFT Screen
- SD card recording
- Voice recording function
- Powered by DC Power adapter or 4 x AA batteries

| Model No | Description         |
|----------|---------------------|
| 520-150  | VJ-ADV 6.9mm x 1.5m |
| 520-151  | VJ-ADV 6.9mm x 3m   |
| 520-152  | VJ-ADV 6.9mm x 5m   |
| 520-153  | VJ-ADV 6.9mm x 8m   |



## iRis XT ATEX Rated Articulating Videoscope

**ATEX Rating - Ex II 3 G Ex ic nA IIC T4 Gc**  
**-25°C < Ta < +45°C**

Extremely compact dimensions, minimal weight and optimal handling are the outstanding attributes of the iRis XT ATEX rated Videoscope Inspection system available from Dart Systems Ltd.

The iRis XT is dedicated to search for contraband in hidden areas of cars, buildings and other areas. The insertion tube is gasoline and fuel resistant and allows the user to ground the iRis with the inspection area.

With minimal effort the iRis XT is ready to use in seconds. The distal end can be moved to any desired position fast, easy and precisely due to the approved tactile 2 and 4-way articulation of up to 360°. The high brightness of the LED light source (inside the scope handle) guarantees that you will not miss any detail on the 5" high resolution TFT display. The integrated, changeable & rechargeable high powered battery allows 2 hours of operating time. The balanced handle allows for long & effortless use.

The iRis DVR XT Inspection System is a 'ready to go' Video kit which includes the iRis XT Inspection System (specified by articulation, diameter & working length) with one battery, charger and neck-holder in a iRis case.

| Part No            | System            | Diameter | Length | DOV |
|--------------------|-------------------|----------|--------|-----|
| <b>4mm x 4-way</b> |                   |          |        |     |
| 279-44015          | iRis 44-15 DVR XT | 4mm      | 1.5m   | 0°  |
| 279-44020          | iRis 44-20 DVR XT | 4mm      | 2m     | 0°  |
| 279-44030          | iRis 44-30 DVR XT | 4mm      | 3m     | 0°  |
| 279-44040          | iRis 44-40 DVR XT | 4mm      | 4m     | 0°  |
| <b>6mm x 4-Way</b> |                   |          |        |     |
| 279-46015          | iRis 46-15 DVR XT | 6mm      | 1.5m   | 0°  |
| 279-46020          | iRis 46-20 DVR XT | 6mm      | 2m     | 0°  |
| 279-46030          | iRis 46-30 DVR XT | 6mm      | 3m     | 0°  |
| 279-46040          | iRis 46-40 DVR XT | 6mm      | 4m     | 0°  |
| 279-46050          | iRis 46-50 DVR XT | 6mm      | 5m     | 0°  |
| 279-46060          | iRis 46-60 DVR XT | 6mm      | 6m     | 0°  |
| 279-46075          | iRis 46-75 DVR XT | 6mm      | 7.5m   | 0°  |
| <b>8mm x 4-Way</b> |                   |          |        |     |
| 279-48015          | iRis 48-15 DVR XT | 8mm      | 1.5m   | 0°  |
| 279-48020          | iRis 48-20 DVR XT | 8mm      | 2m     | 0°  |
| 279-48030          | iRis 48-30 DVR XT | 8mm      | 3m     | 0°  |
| 279-48040          | iRis 48-40 DVR XT | 8mm      | 4m     | 0°  |
| 279-48050          | iRis 48-50 DVR XT | 8mm      | 5m     | 0°  |
| 279-48060          | iRis 48-60 DVR XT | 8mm      | 6m     | 0°  |
| 279-48075          | iRis 48-75 DVR XT | 8mm      | 7.5m   | 0°  |



## iRis DVR 7



Compact dimensions, minimal weight and optimal handling are the outstanding attributes of the iRis DVR 7 Videoscope. With the tactile 4-way 360° articulation the distal end can be positioned as desired in a fast, precise manner. Adjustable and interchangeable lenses with different fields of view, focal points and working distances as well as the ultra-high brightness of the light source guarantee that you do not miss any detail on the 7" TFT screen. The integrated rechargeable high powered battery allows 2 hours continuous use or the system can be powered from the mains with the optional 12v adapter.

- 7" TFT Colour Touch Screen
- Display Resolution: VGA (1024x600 pixels)
- Battery: Li-Ion
- Video Format: MPEG4 (.avi) with time & date
- Image Format: BMP (bmp) with time & date
- Storage: SDHC Memory Card up to 32GB
- Image Sensor: High Res Super HAD CCD
- Zoom: 16 Step Digital
- Built in text overlay generator
- Colour Temp: 6500K
- Lamp Life: 5000 hrs
- Tip Operating Temp: -25°C to 80°C
- Waterproof Rating: Probe and distal end up to 14.7psi (1 Bar)
- User Interface: Direct action keys / function keys / arrow keys
- 4 Way Articulation
- 1.5 - 7.5 Mtr Length

## Description

4mm Dia Probe - Integrated Objective Lens - Lengths 1.5 - 4 Mtr  
 6mm Dia Probe - Interchangeable Objective Lens - Lengths 1.5 - 7.5 Mtr  
 8mm Dia probe - Interchangeable Objective Lens - lengths 1.5 - 7.5 Mtr

## XLED digital



The XLED Video system is a small and highly portable inspection system for all kinds of infield inspections. The system contains the 3mm or 4mm XLED Videoscope with a 2-way Articulating cable combining a high quality image (compared to standard fiberscopes) with an attractive price. There are 2 versions of the XLED Videoscope available, one is dedicated to 0° DOV (Direction of View) and one dedicated to 90° DOV both with a 90° FOV (Field of View). With the integral High Powered Light Source and the iCapture Digital Monitor it makes a complete and easy to handle Video Inspection System. The XLED Videoscope comes with the iCapture Digital Monitor (with rechargeable battery) or with a HDMI box to connect to any HDMI monitor.

- 5" TFT Colour Monitor
- Rechargeable Li-ion Battery
- Optional 12v power adapter
- Display Resolution: 640 x 480 pixel
- Colour Temperature: 6500K
- Probe: Multilayer tungsten braid on PU jacket
- Waterproof to 1 bar
- Oil and saline resistant
- Operating Temperature: -25°C to +80°C
- Digital zoom

## Description

3mm or 4mm x 1.5 Mtr Side View (90° DOV), 2 Way Articulation  
 3mm or 4mm x 1.5 Mtr Forward View (0° DOV), 2 Way Articulation  
 6mm Dia. Available on request



### iSeries interchangeable probes

Industrial Videoscope with focusable lens adjust focus range without changing lenses. Four advanced innovations are designed into resulting in extremely economical Videoscope inspections. Match your budget requirements utilizing a range of image displays, image management system or documentation systems for playback, still image or video recording. The same modularity also applies to light sources, light source adapters and light guide cable adapters. The iSeries Videoscope can be connected with almost any light source. This modular Videoscope is scalable and may be upgraded or retrofitted to meet your evolving needs. A solution that grows with you!

- Excellent image quality
- Interchangeable lenses
- Ergonomic handle
- Precise articulation control
- Temperature resistant up to 140°C
- Variable video interface
- Working channel (iWC)
- UV Version

### UV Light illumination

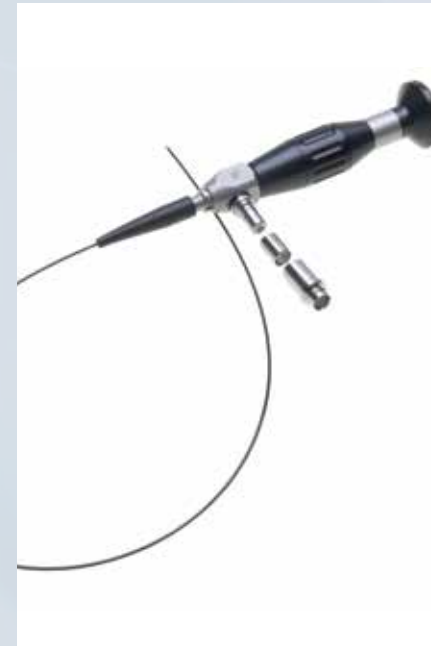
Standard Videoscope's are built with glass fibers to optimise the transmission of light in the visible range. Those fibers absorbing the UV light that is necessary for fluorescence stimulation. A special instrument is required in order to transmit the ultra violet light and view the fluorescing image with the same device. IT Concepts offers for UV (Ultra Violet) illumination flexible Videoscope's with articulation. The integrated high transmission quartz fibers allow effective illumination of UV light, starting at 250nm.



### iWC Working Channel

iWC Working Channel helps you retrieve foreign objects, take samples, hook or drag objects that are difficult to reach. A variety of tools are available which allows you to perform a wide range of applications.

- See and work
- Working lengths up to 7.5 Mtrs
- Snare basket
- Three prong grabber
- Hook
- Magnet
- Side view tip



### Microflex

MicroFlex micro fibre endoscopes are developed especially for industrial applications with tight inspection apertures or small drill holes. MicroFlex endoscopes are ideal for inspecting small workpieces, delicate drill holes, injection tubes, turbine blades, random inspection in large series production and security relevant parts. MicroFlex fibre endoscopes are available in different styles:

- Elegant, high-resolution, flexible
- Optical imaging guide made from silica fibre
- Variable working lengths
- Diameter 0.5mm to 1.8mm
- Special designs possible on request

### iFlex

iFlex Fiberscopes contain an optical image guide made of highly flexible, thin and parallel single fibres. A focusable ocular adjusts the optic system to the visual acuity of the viewer. Additional to the direct view objective, a side view tip adapter can be provided.

- High resolution flexible and controllable
- Robust
- Optical image guide made from highly flexible fibre glass
- Various working lengths
- 2.4mm to 8mm Diameter





### Rigid Endoscopes – Industrial Line

The extreme robust rigid and semi flexible endoscopes of the industrial line were especially developed for industrial applications. The well-thought-out lens system of the industrial line endoscopes delivers low distorted, high precision images. They are characterized by high image quality and heavy duty design. Industrial line endoscopes are available in different styles:

- High precision
- Ideal for small cavities
- 1.9mm to 4mm Diameter
- Length: 175mm to 302mm
- Various DOV 0°, 30°, 70°, 90°

### Light Sources

Light Guides and cables to link light sources and borescopes are available in various diameters, lengths and fittings. Please contact the office to discuss.



### SuperNOVA

The HawkEye SuperNOVA Light comes with all Pro Borescope kits. This xenon doped halogen light is bright enough for all but the largest and darkest cavities. It shows detail you would miss with a less powerful light.

- Xenon 3w Torch Style Light source

| Model No      | Description |
|---------------|-------------|
| 545-SUPERNOVA | SuperNOVA   |

### Luxxor 35

The Luxxor 35 Light has a 24-watt metal halide arc lamp, for very high brightness. It is 60% brighter than a typical 150w halogen light. Use it for dark, deep subjects and video or still photography.

- Lamp Life: 500hrs

| Model No     | Description   |
|--------------|---------------|
| 545-LUXXOR24 | Luxxor24 240v |



### Multi Swing Prism

Multi Swing Prism Borescopes from IT Concepts are highly developed inspection devices, assembled from highly precise optical and mechanical parts. Design, construction and special manufacturing make them suitable for professional use in daily rough industrial applications. By means of Multi Swing Prism an individually adjustable direction of view is provided.

This allows prograde (forward) or retrograde (backward) view during the inspection without changing the scope.

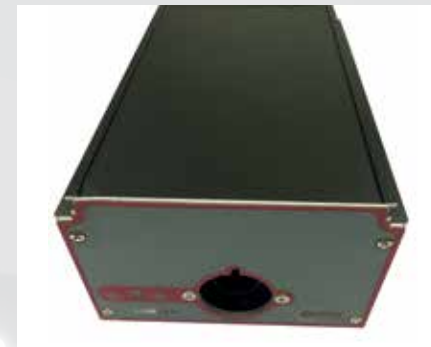
Probe diameter from 6,0mm up to 9,0mm  
Working length from 115mm up to 1405mm

- Robust high precision optics
- 370° Rotation
- Line of vision: 7° to 133°
- Angle of vision: 45°

### LUMLED

The LUMLED Light Source is a high powered LED light source producing a light with a colour temperature of 4500k using 8 watt LED's. The LED's has a lamp life of approx. 50,000 hours making this a very cost effective light source.

- Lamp Life: 50,000hrs



| Model No   | Description |
|------------|-------------|
| 545-LUMLED | LUMLED 230v |

## Security

Hiding places for drugs, contraband, explosives and weapons become more and more ingenious. Stolen automobiles are increasingly difficult to identify, especially when time is short. Therefore manageable means of inspection, surveillance and reconnaissance are indispensable for investigators and security agencies. Operative and tactical means for danger prevention by IT Concepts are approved, sturdy and hard wearing. They have been in use for years in great quantities by military in crisis regions, police and customs all over the world. ITC your partner in technologies for preserving homeland security.



### iRis MiL

- Made for security
- Visible and infrared LED
- Light sensitive B&W Super-HAD CCD sensor
- Noiseless articulation control
- 5" high resolution display
- Bright and high contrast display
- 8mm Dia Probe
- Available 1, 2, 3 Mtr lengths
- Sensitivity 0.005 Lux

## IR Under Door kit

- IR Under Door Camera
- Switchable DOV (forward / up)
- Light sensitive B&W Super-HAD CCD sensor
- 6mm Blade height
- Direction of view 15°



### flexLED

The LED endoscope is designed specifically for law enforcement. This is the only fiberscope with incorporated battery and LED lighting directly into the handle. There are no cables to connect, making it the easiest and fastest endoscope to use. The scope can be easily grounded and allows fast and safer inspection of tanks, doors, ventilation systems and other cavities.

- Non-conductive polyurethane tube or tungsten braid
- 6mm Dia 2 way articulation
- Lengths 1.5 – 2.7 Mtrs
- High power LED integral light source
- Petrol and Oil resistant

## Hawkeye



The clarity and brightness of the Hawkeye Pro Slim Borescope brings out all the details in your subject. Every Hawkeye is designed with professional users in mind. These top of the line rigid borescopes deliver bright clear detailed high contrast images. Every Hawkeye Borescope includes: the latest endoGRINS image relay lenses, multicoated objective lens, Super bright, portable superNOVA Light with rechargeable SuperNOVA Lithium-Ion batteries.

**Kits include** (there may be some variation depending on model ordered)

- Hawkeye pro Precision Borescope
- 90° Mirror Tube
- SuperNOVA Light and charger
- Rugged Hawkeye Carrying Case
- Hawkeye Cleaning kit

### Pro MicroSlim 1.85mm Dia

| Model No     | Description                      |
|--------------|----------------------------------|
| 545-MS03-NVK | Pro MicroSlim Kit 1.85mm x 80mm  |
| 545-MS05-NVK | Pro MicroSlim Kit 1.85mm x 120mm |
| 545-MS07-NVK | Pro MicroSlim Kit 1.85mm x 178mm |

### Pro SuperSlim 2.49mm Dia

| Model No      | Description                      |
|---------------|----------------------------------|
| 545-PSS-04NVK | Pro SuperSlim Kit 2.49mm x 102mm |
| 545-PSS-08NVK | Pro SuperSlim Kit 2.49mm x 185mm |

### Pro MicroSlim 1.85mm Dia

| Model No      | Description                      |
|---------------|----------------------------------|
| 545-PSS-10NVK | Pro SuperSlim Kit 2.77mm x 265mm |
| 545-PSS-14NVK | Pro SuperSlim Kit 2.77mm x 350mm |
| 545-PSS-17NVK | Pro SuperSlim Kit 2.77mm x 435mm |

### Pro Hardy 6.35mm Dia

| Model No     | Description                  |
|--------------|------------------------------|
| 545-PH07-NVK | Pro Hardy Kit 6.35mm x 180mm |
| 545-PH12-NVK | Pro Hardy Kit 6.35mm x 305mm |
| 545-PH17-NVK | Pro Hardy Kit 6.35mm x 435mm |
| 545-PH22-NVK | Pro Hardy Kit 6.35mm x 559mm |

### Pro Super Hardy

| Model No      | Description                       |
|---------------|-----------------------------------|
| 545-PSH28-NVK | Pro Super Hardy kit 7.2mm x 711mm |
| 545-PSH37-NVK | Pro Super Hardy kit 7.2mm x 940mm |

### Pro Slim 4.2mm Dia

| Model No     | Description                 |
|--------------|-----------------------------|
| 545-PS02-NVK | Pro Slim Kit 4.2mm x 50.8mm |
| 545-PS07-NVK | Pro Slim Kit 4.2mm x 180mm  |
| 545-PS12-NVK | Pro Slim Kit 4.2mm x 305mm  |
| 545-PS17-NVK | Pro Slim Kit 4.2mm x 435mm  |
| 545-PS22-NVK | Pro Slim Kit 4.2mm x 560mm  |

## HD Articulating Videoscopes

### Q-Series Industrial Videoscope

The Q Series Articulating Videoscope adopts the latest digital high-definition image processing technology, with a 5.5 inch OLED large touchscreen to ensure clear images. The Q Series offers diameters from 1.1mm up to 6mm and lengths from 1m up to 3m, these systems offer a choice of Depth of Field and Field of View making these the most up-to-date Articulating Videoscopes on the market. Another benefit of these systems is the LED lighting has improved greatly with the Lux rating for the Q Series starting from 8,000 up to 100,000 depending on model selected. The Q Series has a replaceable insertion tube structure with multiple camera options which offers the user the choice and flexibility to suit their needs with one base unit and multiple insertion tubes. The Q-Series 1.7 & 2.2mm diameter systems have 2-way articulation and the 2.8mm, 4mm & 6mm have 4-way articulation.

*Because of the range of diameters, lengths and depth of field, it is advised to contact the office to discuss which system would suit your application.*



- Screen HD OLED
- Zoom - 10 Levels 2.5 X
- Image Colour Colour or Negative
- Screen Res 1920 x 1080
- Tube Tungsten Braided Insertion Tube
- Photo Format BMP, PNG, JPG
- Video Format AVI, MP4
- Measurement 2D comparison measurement
- Probe Working Temp -20° to +70°
- Text Annotate Photo, Add Arrows /Comments
- Ports HDMI, Micro USB

### Q-Series Dual Camera Videoscope

As the Q-Series Videoscope but with two cameras at the tip, one facing forward and the other facing at 90°.



| Part No        | Description | DOF (mm)        | FOV            | Lux                |
|----------------|-------------|-----------------|----------------|--------------------|
| 525-9040100891 | 4mm x 1m    | F:5-100; S:3-50 | F:100°; S:120° | F:45,000; S:10,000 |
| 525-9040100892 | 4mm x 1.5m  | F:5-100; S:3-50 | F:100°; S:120° | F:45,000 S:10,000  |
| 525-9040100893 | 4mm x 2m    | F:5-100; S:3-50 | F:100°; S:120° | F:45,000 S:10,000  |
| 525-9040100894 | 4mm x 3m    | F:5-100; S:3-50 | F:100°; S:120° | F:45,000 S:10,000  |
| 525-9040100876 | 6mm x 1m    | F:8-100; S:3-50 | F:100°; S:100° | F:30,000 S:30,000  |
| 525-9040100877 | 6mm x 1.5m  | F:8-100; S:3-50 | F:100°; S:100° | F:30,000 S:30,000  |
| 525-9040101076 | 6mm x 2m    | F:8-100; S:3-50 | F:100°; S:100° | F:30,000 S:30,000  |
| 525-9040100878 | 6mm x 3m    | F:8-100; S:3-50 | F:100°; S:100° | F:30,000 S:30,000  |

#### Videoscope Stands for Q-Series & M-ADV

| Part No | Description             |
|---------|-------------------------|
| 525-500 | M-ADV Standard Stand    |
| 525-501 | M-ADV Magnetic Stand    |
| 525-502 | Q-Series Standard Stand |
| 525-503 | Q-Series Magnetic Stand |



### M-ADV Industrial Videoscope

The M-ADV Series Articulating Videoscope uses the latest image processing technology to produce high resolution images using ultra bright lighting up to 10,000 Lux. The high output LED and Fibre light source provides excellent light rendering and colour interpretation. The M-ADV Series offers a diameter range from 2.2mm



up to 6mm and cable lengths of 1m up to 10m depending on model selected. The 360° joystick provides excellent camera tip movement with the ability to understand where the camera head is when conducting an inspection. The camera heads produce a Field of View from 100° to 120° depending on which model is selected. The M-ADV 2.2mm diameter systems have 2-way articulation and the 2.8mm, 3.9mm & 6mm have 4-way articulation.

*Because of the range of diameters, lengths and depth of field, it is advised to contact the office to discuss which system would suit your application.*

- Screen High Brightness IPS, 3.5 inch LCD
- Screen Res 640x480
- Tube Tungsten Braided Insertion Tube
- Photo Format JPG, JPEG
- Video Format AVI
- Zoom 4x Digital Zoom
- Working Temp. -20° - 50°
- Ports HDMI, Micro USB, Headset interface

### M-ADV Dual Camera Videoscope

As the M-ADV Series Videoscope but with two cameras at the tip, one facing forward and one facing at 90°.

| Part No      | Description | DOF (mm)       | FOV           | Lux               |
|--------------|-------------|----------------|---------------|-------------------|
| 525-11263010 | 6mm x 1m    | F:7-80; S:3-30 | F:100°; S:90° | F:5,000; S:10,000 |
| 525-11263015 | 6mm x 1.5m  | F:7-80; S:3-30 | F:100°; S:90° | F:5,000; S:10,000 |
| 525-11263020 | 6mm x 2m    | F:7-80; S:3-30 | F:100°; S:90° | F:5,000; S:10,000 |
| 525-11263030 | 6mm x 3m    | F:7-80; S:3-30 | F:100°; S:90° | F:5,000; S:10,000 |
| 525-11263050 | 6mm x 5m    | F:7-80; S:3-30 | F:100°; S:90° | F:5,000; S:10,000 |
| 525-11263080 | 6mm x 8m    | F:7-80; S:3-30 | F:100°; S:90° | F:5,000; S:10,000 |
| 525-11263010 | 6mm x 10m   | F:7-80; S:3-30 | F:100°; S:90° | F:5,000; S:10,000 |

### M-RF IR Series Infra-Red Industrial Videoscope

The M-RF series IR Infrared Industrial Borescope Camera is a customized endoscope type for such special industries. Based on mechanical control of 360° rotation, it can reduce the noise to the lowest level. With a 6mm infrared night vision lens, it can achieve 10-meter/20-meter effective observing distance under a totally dark environment, in order to lower the risk of observers. In the process of criminal investigation and security work, how to skilfully and secretly observe the target environment plays an essential role.

- M-RF series night vision endoscope can achieve 10-meter/20-meter effective observation distance under a totally dark environment and the lens with invisible light (940nm).
- 6mm front camera makes it possible to be inserted into small space to observe.
- 450,000 effective pixels, the visual field can be clearly detected.
- Mechanical control of 360° rotation can achieve observation in all small direction.
- The whole body weighs only 0.6kg, portable and convenient
- Interchangeable probes— one main body can match several probes to satisfy different demands.
- Optional magnetic support base, the host can be attached to the detected shell (metal material) in special circumstances.
- Removable Host and support base structure, easy to work on the desktop when the product will be fixedly placed.

| Part No      | Description                   |
|--------------|-------------------------------|
| 525-11165010 | M-RF 6mm x 1m IR Videoscope   |
| 525-11165015 | M-RF 6mm x 1.5m IR Videoscope |
| 525-11165020 | M-RF 6mm x 2m IR Videoscope   |
| 525-11165030 | M-RF 6mm x 3m IR Videoscope   |



### Toilet Augers

High quality tools in 3' (1 m) and 6' (2 m) lengths provide fast and safe clearing of toilet obstructions.

- Vinyl guard to protect porcelain
- Large, ergonomically designed handles
- New durable, kink resistant, ½" (12,7mm) compression-wrapped inner core
- Negotiate water-conserving toilets



| Model No  | Description                                   |
|-----------|---|
| 411-46683 | Ridgid K-1 4 Ft Auger manual or drill powered |
| 411-59787 | Ridgid K-3 3 Ft Auger manual                  |
| 411-56658 | Ridgid K-6P 6Ft Auger manual                  |

### Power Spinner

Clears blocked drains with ease.

- Clears up to 1 ½" (40mm) pipes
- Cable self-feeds down drain
- Pull trigger and turn handle, or add variable speed (left / right) chuck drill for extra power
- No mess. Hands don't touch cable
- Equipped with 6.3mm x 7.6 Mtr cable with straight Auger

| Model No  | Description       |
|-----------|-------------------|
| 411-57043 | Ridgid Power Spin |



### K-25 Hand Spinner

The professional's choice for many years, the Model K-25 Hand Spinner offer premium quality.

- Premium quality 3 jaw chuck
- Works through traps and bends in sinks, tubs, toilets urinals and vent pipes.
- Available in bulb head and drop head models
- 8mm x 7.6 Mtr vinyl wrapped inner core kink resistant cable



| Model No  | Description                               |
|-----------|---|
| 411-58890 | K-25-BP Hand Spinner with Bulb Auger      |
| 411-58895 | K-25-DH Hand Spinner with Drop Head Auger |

### Ridgid PowerClear Drain Cleaning Machine 60753



The powerful, compact and versatile new PowerClear™ drain cleaner effortlessly cleans tub, shower or sink blockages from 3/4" to 1 1/2" diameter.

- AUTOFEED® TECHNOLOGY – Keeps your hands clean and free from touching the cable while advancing and retrieving
- HEAVY DUTY INNER CORE CABLE – For long life, increased strength and kink resistance
- CLEAR COVER – Allows user to view how much cable is remaining
- TWO-PIECE GUIDE HOSE – Use one piece for close applications and extension for areas where access is limited
- EASY PULL DRAIN PLUG – Drain excess water after each use to extend cable life
- GUIDE HOSE – Helps keep work area clean

#### Specifications

- Drain Capacity: ¾" – 1½"
- Weight: 12 lbs
- Feed Rate: 8 ft/min
- Operating Speed: 450 RPM
- Cable Length: 30'
- Motor: 240V, 1Ph, AC, 0.9 Amp, 60HZ
- Standard Equipment: PowerClear, Hose Extension

| Model No  | Description                            |
|-----------|--|
| 411-60753 | PowerClear Drain Cleaning Machine 240V |
| 411-55983 | ¾" – 30ft Replacement Cable            |



### K-45AF Sink Machine

For 20mm to 75mm Drain Lines.  
The K-45 family of Drain Guns are the professional's choice for cleaning small secondary drain lines from 3/4" (20mm) to 2 1/2" (75mm). The K-45AF-5 opens clogged lavatory, sink lines, urinals, and tub/shower drains.

- Advanced two way AUTOFEED keeps hands and work area clean- advances & retrieves cables with a push of the lever
- Variable speed power unit rotates cable 0-600 RPM's
- Two piece twist lock canister with interchangeable drum
- Drum capacity 15 Mtrs of 8mm or 11 Mtrs of 10mm.

| Model No  | Description  |
|-----------|--|
| 411-37338 | K-45AF 110V (UK) 8mm x 7.6 Mtr Cable                                       |
| 411-63703 | K-45AF 230V (UK) 8mm x 7.6 Mtr Cable                                       |
| 411-37343 | K-45AF-5 110V (UK)<br>8mm x 7.6 Mtr & 10mm x 10.7mm Cable, tool kit & Case |
| 411-63698 | K-45AF-5 230V (UK)<br>8mm x 7.6 Mtr & 10mm x 10.7mm Cable, tool kit & Case |



### K-400 Drum Machine

For 30 mm to 110 mm Drain Lines.  
The Model K-400 Drum Machine offers several unique, user friendly features to make the toughest jobs easier. Designed with a sleek profile, integrated transport trolley an telescoping handle makes the K-400 great for site access.

- Supplied with 10 mm x 7.5 Mtr Cable but will take optional 12mm by 15 Mtr or 23 Mtr Cable
- Integrated Transport Trolley
- Integrated Telescoping handle
- Cable Control System – stops the drum spinning when the blade becomes lodged in a blockage which limits the potential for the cable to flip over.
- AUTOFEED – Automatic cable feed powers the cable in and out of the drum
- 380 Watt Motor for exceptional torque

| Model No  | Description   |
|-----------|---|
| 411-28098 | K-400, 230V, 10mm x 23 Mtr Cable, T-260 Tool Kit & Gloves |
| 411-28103 | K-400 230V 12mm x 23 Mtr Cable, T-260 Tool Kit & Gloves   |



### K-40 Sink Machine

For 20mm to 75mm Drain Lines.  
The K-40 sits flat on the floor or tips back for easy access to sink drains and bath tubs, it also eliminates job site thanks to the patented Guide Hose two-way AUTOFEED. It completely contains the rotating cable and eliminates and waste water splashing or spraying.

- 174W induction motor for powerful torque to clear the toughest blockages
- Premium quality, compression wound inner core cable combines strength and flexibility to resist kinking
- Two piece "twist lock" drum housing
- 8mm x 10.7 Mtr Cable

| Model No  | Description                            |
|-----------|--|
| 411-71742 | K-40 230V UK with AUTOFEED, Guide Hose |



### K-750 Drum Machine

For 75 mm to 200 mm Drain / Sewer Lines  
The K-750 is a heavy duty Drum Machine for clearing tress roots and heavy duty blockages.

- Autofeed advances and retrieves cable with a push lever at up to 6 Mtr per minute
- Cable spins at 200 RPM
- Powerful 550 Watt motor
- Tough, corrosion resistant drum withstands harsh treatment and abuse. Will not dent or corrode and cleans easily.
- Well balance design gives machine a lightweight "feel". Transport wheels ease loading into service truck or van
- Versatile AUTOFEED control adjusts for either 16mm or 20mm cables with a twist of a screwdriver.
- Recommend 16mm Cables for 75mm to 150mm drain lines
- Recommend 20mm Cables for 110mm to 250mm drain lines

| Model No  | Description   |
|-----------|---|
| 411-44152 | K-750 w/C-75, 230V, 20mm x 23 Mtr Cable, Tool Kit & Gloves  |
| 411-44157 | K-750 w/C-100, 230V, 20mm x 30 Mtr Cable, Tool Kit & Gloves |
| 411-44162 | K-750 w/C-27 230V 16mm x 23 Mtr Cable, Tool Kit & Gloves    |





### FlexShaft Machines

Clear drain lines from 1½" to 6" (32mm to 150mm).

The RIDGID FlexShaft machines are lightweight, compact and highly efficient machines that deliver wall to wall clean in 32mm to 150mm pipes up to 38 Mtrs in length.

The K9-102 and K9-204 FlexShaft machines utilize specialized chain knockers attached to a flexible cable that are spun at high speeds by a cordless drill with an adjustable clutch (not included) attached to the centre drive shaft. Since the cable spins inside a durable nylon sheath that is housed within a fully contained drum, there is less jobsite mess.

The K9-309 FlexShaft machine quickly clears grease buildup, roots and heavy scale using a 38 Mtr Cable with one step of the foot switch. It features a professional 1.5 HP internal universal motor for maximum power and longevity, a fully enclosed drum to minimize set-up and clean time, and a telescoping handle with multiple wheels and grab points to make loading, unloading, storage and use as easy as possible.

FlexShaft machines can also be operated while an inspection camera is in the line letting you see while you clean. No other soft blockage expert can do this.

Contact the office for the full range of Chain Knockers available for the FlexShaft.

| Model            | K9-102   | K9-204   | K9-306   |
|------------------|----------|----------|----------|
| Drain Capacity   | 32-50mm  | 50-100mm | 75-150mm |
| Cable Dia.       | 6mm      | 8mm      | 10mm     |
| Outer Cable Dia. | 9.5mm    | 12.7mm   | 16mm     |
| Cable Length     | 15.2 Mtr | 21.3 Mtr | 38 Mtr   |
| Weight           | 11 Kg    | 17.3 Kg  | 72 Kgs   |

| Part No   | Description              |
|-----------|--------------------------|
| 411-64268 | FlexShaft K9-102         |
| 411-64278 | FlexShaft K9-204         |
| 411-66598 | FlexShaft K9-306 110V-UK |
| 411-76188 | FlexShaft K9-12          |





### KJ-1590 Water Jetter

The KJ-1590 Water Jetter is a highly flexible, lightweight Jetter which can blast through sludge, soap and grease blockages. As you pull the hose back it power washes the line, flushing debris away and restoring the drain line to its full capacity.

- Actual working pressure 1160psi (80 bar) and flow of 15 Ltrs per minute
- Safe for use inside building due to its powerful 2.2kw motor with overload protection
- 3 plunger pump with pulse action
- Heavy duty steel reel with 20 Mtr of 1/2" Hose
- For 32mm to 150mm Drain Lines

| Model No  | Description   |
|-----------|---|
| 411-35511 | KJ-1590, 230V, 20 Mtrs x 1/2" Hose with Propulsion & Penetrating Nozzle |

### KJ-2200 Water Jetter

RIDGID Water Jetting Machines are constructed for cleaning a drain. The highly flexible, lightweight hose blasts through sludge, soap and grease blockages. As you pull the hose back, it power washes the line, flushing debris away and restoring drain lines to their full, free-flowing capacity.

- New improved 6.5HP Recoil start petrol engine.
- Powerful 2200psi (150 Bar) and flow of 9 l/m plus Pulse Action
- Convenient FV-1 foot valve. It makes remote or indoor operation simple and safe. You control the jetting action at the drain while the Jetter is outdoors.
- Portable: The optional Model H-30 cart rolls the Jetter and hose to the job site. The jetter is easily removed from the cart in seconds for hard to reach drains, indoor applications or remote storage.
- For 32mm to 150mm Drain lines

| Model No  | Description  |
|-----------|--|
| 411-63877 | KJ220 Jetter with Pulse and Foot Valve                           |
| 411-63882 | KJ-220 Jetter with Pulse and Foot valve + H-30 Cart and Jet Hose |



### KJ-3100 Water Jetter

The RIDGID KJ-3100 portable water jetter gives you 3000psi (205 bar). This jetter propels a highly flexible and lightweight hose through 150mm to 250mm pipes – blasting through sludge, soap, grease and sediment blockages. With the KJ-3100's removable hose reel. There is no need to purchase expensive portable hose reels.

- Quick start 16HP Recoil petrol engine
- Unique two wheeled cart, easily fits through standard door sizes and can negotiate tight turns with ease
- Supplied with Hose reel 3/8" x 61 Mtrs
- Working pressure 3000psi (205 bar) with 21 l/m flow rate.
- For 50mm to 250mm Drain Lines

| Model No  | Description                              |
|-----------|--|
| 411-37413 | KJ-3100 Jetter with Pulse and foot valve |



### Ridgid Cutters



#### C-Style Close Quarters Copper Tubing Cutter

Ridgid C-Style cutters cut 15/22 or 28mm copper tubing while offering unique features that take copper tube cutting to a whole new level.



- Snap on feature for a quick pipe connection and no size adjustment, saving valuable time.
- Spring loaded cutter wheel provides a constant pressure on pipe providing fast and straight cuts every time.

- RIDGID's X-CEL® Wheel Pin for quick wheel replacement. No tools or disassembly of the housing required.
- Model C15/22 is the world's first size dedicated C-style Cutter to cut both 15 and 22mm copper tubing with the unique "quick size change" feature.
- Unique screwdriver slots in the housing provide the extra leverage for making the cut in extreme tight spaces.

| Model No  | Description                                   |
|-----------|---|
| 411-57018 | C15/22 15 & 22mm C Style Copper tubing cutter |
| 411-60668 | C28 C Style Copper tubing cutter              |
| 411-57028 | E-3410 Replacement Wheel                      |

#### 65S & 35S S/Steel Tubing Cutters



These tubing cutters have been designed for optimised performance on Stainless Steel Tube.

- A contoured frame allows for easy alignment while adjusting the cutter to make a cut.
- Ergonomic knob allows for easy adjustments.
- Now includes X-CEL® Knob for quicker cutting
- Six individual bearings in the 15-SI and 35S and 12 in the 65S replace traditional rollers. The bearings create a smoother cut, and allow for increased speed around the tube.
- Specially designed Stainless Steel cutter wheel in 35S and 65S contains bearings in the hub, to decrease drag around the tube for a smoother cut

| Model No  | Description                                     |
|-----------|---|
| 411-29963 | 35S Stainless Steel Cutter                      |
| 411-31803 | 65S Stainless Steel Quick Acting Tube Cutter    |
| 411-29973 | E635 Stainless Steel Cutter Wheel with bearings |

#### Quick Acting Tube Cutters



- Models 151-156 feature a quick-acting design, I-beam construction, hardened wear surfaces and thrust bearing slide assemblies for smooth operation.

- X-CEL Knob cuts tubing more quickly and easily with a larger, more ergonomic design.
- X-CEL Wheel Pin changes your cutter wheel quickly using a new ball detent design – no tool needed, no lost clips.
- Available in model for plastic pipe or metallic tubing.

| Model No  | Description                              |
|-----------|--|
| 411-31632 | 151 Quick-Acting Tubing Cutter 6-42mm    |
| 411-31642 | 152 Quick-Acting Tubing Cutter 6-66mm    |
| 411-36597 | 153 Quick-Acting Tubing Cutter 32-90mm   |
| 411-31652 | 154 Quick-Acting Tubing Cutter 48-116mm  |
| 411-31662 | 156 Quick-Acting Tubing Cutter 100-170mm |

#### 2 in 1 Close Quarters AUTOFEED Cutter



The RIDGID Model 118 Close Quarters with AUTOFEED operation is available with a ratchet handle to allow for easier cutting in tight, restricted spaces. With its rugged and compact design, the handle can be attached to the cutter and operated in ratchet steps as small as 10 degrees. The new ratchet handle allows more flexibility and mobility while keeping the AUTOFEED features of the model 118 Cutter, which is designed to cut hard and soft copper, aluminium and brass.

- Features the 2 in 1 Close Quarters Cutter where the cutter can be used alone or with the ratchet handle, a light and ergonomic accessory to help use the cutter in tight and restricted spaces.
- Adjustable to any size from 6-28mm OD
- Tubing Cutter comes with spare E-3469 Cutter Wheel in Knob.

| Model No  | Description                                       |
|-----------|---|
| 411-32573 | 118, 2 in 1 Quick feed Cutter with Ratchet Handle |
| 411-32933 | Ratchet Handle only for 101 and 118 Tubing Cutter |

## RP 350/351 Press Tool (For use with STRUTSLAYR)

The RIDGID RP 350/351 feature a brushless motor that is capable of over 100,000 press cycles and requires no scheduled maintenance. Get access to hard-to-reach locations with endless 360° swivel. With the most advanced LED interface and lighting, the RP 350/351 has been upgraded from top to bottom. The RP 351 is an Inline design.

- NEW RIDGID BRUSHLESS MOTOR TECHNOLOGY**  
 The Brushless RP 350/351 offers Higher Performance (faster pressing), Higher Efficiency (more press per charge), Safer Operations (no sparks, no overheating), More Durability (no brushes to wear) and Xtreme Long Life-Cycle (reaching over 100K press cycles).
- NO SERVICE INTERVAL**  
 Brushless Motor Technology combined with an advanced hydraulic system allows the RP 350/351 to reach over 100K press cycles without requiring any scheduled maintenance during its lifetime. There is no Service Interval, no Periodic Service Requirement and no Scheduled Service Downtime.
- INFINITE SWIVEL HEAD**  
 Infinite Swivel-Head (> 360°) for Endless Flexibility on the jobsite. Press from any possible angle!
- SMART GENERATION**  
 Bluetooth 5.0 enables many SMART tool features accessible through our free app RIDGID Link.
- INTEGRATED JOBSITE LIGHTING**  
 Not 1 but 12 LED lights effectively light up the darkest jobsite environments.
- BOLT SENSOR PLUS**  
 Safety First! RP 350/351 only works when the bolt is fully locked. Now with wireless tech and special knob design.
- Press-CHECK!**  
 RIDGID Exclusive Sensor monitors and confirms every single press cycle. For your peace of mind!
- SPEED-PRESS!**  
 Pressing 54 mm Stainless Steel in just 5 seconds? Only with the Brushless RP 350/351!
- Full Power Access**  
 Either use the RP 350/351 with RIDGID Li-Ion batteries 18 V, corded power adapter (5 m cable) or with Makita LXT-series batteries 18 V.
- ADVANCED LED INTERFACE**  
 4 color-coded LED panels instantly provide critical tool information.



| Part No   | Description                    |
|-----------|--------------------------------|
| 411-67088 | RP 350-B Tool Kit (No Jaws)    |
| 411-67093 | RP 350-B Tool Kit + V15-18-22  |
| 411-67098 | RP 350-B Tool Kit + V15-22-28  |
| 411-67103 | RP 350-B Tool Kit + V18-22-28  |
| 411-67108 | RP 350-B Tool Kit + TH16-20-26 |
| 411-67113 | RP 350-B Tool Kit + U16-20-25  |
| 411-69818 | RP 350-B Tool Kit + M15-18-22  |
| 411-69823 | RP 350-B Tool Kit + M15-22-28  |

## RIDGID STRUTSLAYR™ Strut Shear head



The RIDGID® STRUTSLAYR™ delivers fab shop quality, burr-free strut channel cuts on the jobsite in 5 seconds or less. Compatible with RIDGID 32kN press tools\*, the STRUTSLAYR strut cutter offers a clean, consistent cut with a simple pull of a trigger: no grinding or sawing sparks! \*Press tools are not included. Not compatible with RIDGID 320-E or CT-400.

- Increased Efficiency
- Clean, consistent cuts in 5 seconds or less
- Safe Operation
- No grinding or sawing sparks
- Portable
- Easy to move around the job site and mounts to RIDGID TRISTANDs
- Built-in Measuring Guide
- Allows accuracy on the job site

| Part No   | Description                               |
|-----------|---|
| 411-64053 | Kit, Head + Case + 13/16" (41 x 21mm) Die |
| 411-64058 | Kit, Head + Case + 1 5/8" (41 x 41mm) Die |
| 411-64033 | Die Shear 13/16" (41 x 21mm)              |
| 411-64038 | Die Shear 1 5/8" (41 x 41mm)              |

## RIDGID Press Tools

### RP 115 Micro Press Tool

With a weight of only 1,3 kgs and length of 33 cm, the new RP 115 micro-Pressing Tool offers best-in-class tool ergonomics and balance for the easiest and most comfortable pressing experience. RP 115 is the smallest / lightest tool available in the market and is packed with 15 kN electro-hydraulic force for maximum performance covering most of the pressing sizes and applications.

Thanks to its inline micro-Design, the use of unique micro-Jaws and Full One-Handed Operation-capability, the RP 115 is also a true problem solver when it comes to pressing work in the most confined spaces and challenging jobsites.

- 'Micro' Press Tool - With a weight of only 1,3 kgs and length of 33 cm, the new RP 115 micro-Pressing Tool offers best-in-class tool ergonomics and balance.
- Easiest One-Handed Use - Easily open the jaw and press the trigger with one hand.
- Confined Space-Specialist - Thanks to its micro-Design, RP 115 allows for continued and easy operation in the most confined spaces and challenging jobsites.
- SlimGrip™ Handle - Provides firm grip and most comfortable tool use.
- RIDGID SpeedPress - Next level of pressing speed with a cycle time of 3 seconds
- IP44 Ingress Protection - Jobsite Proof for more durability



| Part No   | Description                              |
|-----------|--|
| 411-76948 | RP 115 Micro Press Tool Kit + M15-18-22  |
| 411-76958 | RP 115 Micro Press Tool Kit + V15-22-28  |
| 411-76968 | RP 115 Micro Press Tool Kit + TH16-20-26 |
| 411-76978 | RP 115 Micro Press Tool Kit + U16-20-25  |

### Mini 4.5mm PipeDart

The Mini PipeDart is a frame mounted cable pulling system manufactured from 4.5mm Diameter Composite Fibreglass Rod sheathed in yellow polypropylene to aid wear resistance. Also known as Cobra, Flexi Rod or Duct Rod. The construction of this product allows for fast feed out and rewind is fitted with a friction brake and is supplied with a Bullet End Guide Tip.

- 4.5mm Fibreglass rod with polypropylene sheath
- Brass end fitting and smooth profile bullet end guide tip fitted
- Steel construction Frame
- Dimensions: 560mm x 410mm x 180mm
- Friction brake

| Model No | Description                   |
|----------|-------------------------------|
| 202-30M  | Mini PipeDart 4.5mm x 30 Mtr  |
| 202-50M  | Mini PipeDart 4.5mm x 50 Mtr  |
| 202-80M  | Mini PipeDart 4.5mm x 80 Mtr  |
| 202-100M | Mini PipeDart 4.5mm x 100 Mtr |



### Compact 9mm PipeDart

The PipeDart Compact cobra rodding system gives a compact and labour saving solution for cable installation whether installing cables in ducts, threading draw ropes through larger diameter pipes or when using with a Sonde transmitter for locating pipes and blockages. Fitted with wheels for ease of use.

- 9mm Diameter Fibreglass rod with polypropylene sheath
- Brass end fitting and smooth profile bullet end guide tip fitted
- Steel construction Frame
- Dimensions: 950mm x 820mm x 400mm
- Friction brake

| Model No | Description                     |
|----------|---------------------------------|
| 3C-9-50  | PipeDart Compact 9mm x 50 Mtrs  |
| 3C-9-60  | PipeDart Compact 9mm x 60 Mtrs  |
| 3C-9-80  | PipeDart Compact 9mm x 80 Mtrs  |
| 3C-9-100 | PipeDart Compact 9mm x 100 Mtrs |
| 3C-9-120 | PipeDart Compact 9mm x 120 Mtrs |
| 3C-9-150 | PipeDart Compact 9mm x 150 Mtrs |
| 3C-9-180 | PipeDart Compact 9mm x 180 Mtrs |
| 3C-9-200 | PipeDart Compact 9mm x 200 Mtrs |



### Large Frame Cobras

The PipeDart Large frame cobra rodding system gives aid the use of larger diameters and longer lengths of duct rod aiding productivity. Used for installing cables in ducts, threading draw ropes through larger diameter pipes or when using with a Sonde transmitter for locating pipes and blockages.



### Ferret 6mm PipeDart

The PipeDart 'Ferret' cobra rodding system gives a compact and labour saving solution for cable installation whether installing cables in ducts, threading draw ropes through pipes or when using with a Sonde transmitter for locating pipes and blockages.

- 6mm Diameter Fibreglass rod with polypropylene sheath
- Brass end fitting and smooth profile bullet end guide tip fitted
- Steel construction Frame
- Dimensions: 700mm x 580mm x 250mm
- Friction brake

| Model No | Description                   |
|----------|-------------------------------|
| 3F-6-30  | PipeDart Ferret 6mm X 30 Mtr  |
| 3F-6-50  | PipeDart Ferret 6mm X 50 Mtr  |
| 3F-6-60  | PipeDart Ferret 6mm X 60 Mtr  |
| 3F-6-80  | PipeDart Ferret 6mm X 80 Mtr  |
| 3F-6-100 | PipeDart Ferret 6mm X 100 Mtr |
| 3F-6-120 | PipeDart Ferret 6mm X 120 Mtr |
| 3F-6-150 | PipeDart Ferret 6mm X 150Mtr  |



#### 9mm Diameter Rod

| Model No | Description                   |
|----------|-------------------------------|
| 3L-9-100 | PipeDart Large 9mm x 100 Mtrs |
| 3L-9-120 | PipeDart Large 9mm x 120 Mtrs |
| 3L-9-150 | PipeDart Large 9mm x 150 Mtrs |
| 3L-9-200 | PipeDart Large 9mm x 200 Mtrs |
| 3L-9-250 | PipeDart Large 9mm x 250 Mtrs |

#### 11mm Diameter Rod

| Model No  | Description                    |
|-----------|--------------------------------|
| 3L-11-100 | PipeDart Large 11mm x 100 Mtrs |
| 3L-11-120 | PipeDart Large 11mm x 120 Mtrs |
| 3L-11-150 | PipeDart Large 11mm x 150 Mtrs |
| 3L-11-200 | PipeDart Large 11mm x 200 Mtrs |
| 3L-11-250 | PipeDart Large 11mm x 250 Mtrs |
| 3L-11-300 | PipeDart Large 11mm x 300 Mtrs |

#### 14mm Diameter Rod – High Capacity Frame

(These rods are supplied on high capacity frames for safety.)

| Model No  | Description              |
|-----------|--------------------------|
| 3L-14-100 | PipeDart 14mm x 100 Mtrs |
| 3L-14-150 | PipeDart 14mm x 150 Mtrs |
| 3L-14-200 | PipeDart 14mm x 200 Mtrs |
| 3L-14-250 | PipeDart 14mm x 250 Mtrs |
| 3L-14-300 | PipeDart 14mm x 300 Mtrs |
| 3L-14-350 | PipeDart 14mm x 350 Mtrs |
| 3L-14-400 | PipeDart 14mm x 400 Mtrs |

## PipeDart Accessories



### 4.5 mm Fittings

| Accessories |                                     |
|-------------|-------------------------------------|
| Model No    | Description                         |
| 3-4-EF      | 4mm End Fitting (M5 Thread)         |
| 3-4-S       | 4mm Splice                          |
| 3-46-BE     | 4mm Bullet End                      |
| 3-46-GT     | 4mm Guide Tip                       |
| 3-46-SA     | 4mm Sonde Adapter (M5 / M10 Thread) |
| 320-100     | 4.5mm Repair / Accessory Kit*       |

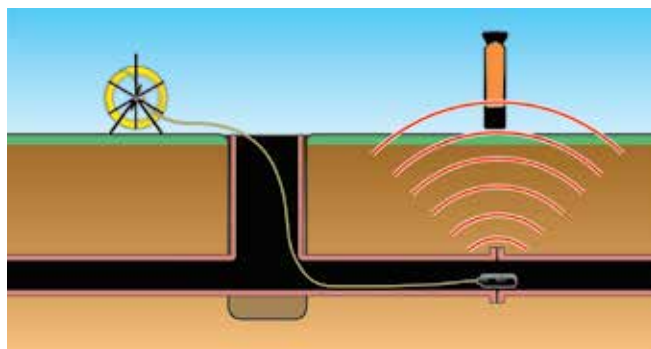
### 6 mm Fittings

| Accessories |                                     |
|-------------|-------------------------------------|
| Model No    | Description                         |
| 3-6-EF      | 6mm End Fitting (M5 Thread)         |
| 3-6-SE      | 6mm Spring End Guide Tip            |
| 3-6-S       | 6mm Splice                          |
| 3-46-GT     | 6mm Guide Tip                       |
| 3-46-BE     | 6mm Bullet End                      |
| 3-46-SA     | 6mm Sonde Adapter (M5 / M10 Thread) |
| 320-101     | 6mm Repair / Accessory Kit*         |

### 9/11 mm Fittings

| Accessories |   |
|-------------|---|
| Model No    | Description                                       |
| 3-9-EF      | 9mm End Fitting (M12 Thread)                      |
| 3-9-S       | 9mm Splice  |
| 3-9-M10F    | 9mm Female M10 End Fitting (For Sonde attachment) |
| 320-102     | 9mm Repair / Accessory Kit*                       |
| 3-11-EF     | 11mm End Fitting                                  |
| 3-11-S      | 11mm Splice                                       |
| 320-103     | 11mm Repair / Accessory Kit*                      |
| 3-911-SE    | Spring End Guide Tip                              |
| 3-911-SA    | Sonde Adaptor (M10 / M12 Thread)                  |
| 3-911-GT    | Guide Tip   |
| 3-911-WGT   | Wheeled Guide Tip                                 |
| 3-911-RG    | Rod Guide Eyebolt                                 |
| 3-911-BT    | Ball Guide Tip (5cm Dia)                          |
| 350-100     | Glue 2 part Epoxy                                 |
| 350-101     | Glue 3ml  |
| 3-SHK-5     | Shackle 5mm                                       |
| 3-SHK-8     | Shackle 8mm                                       |
| 3-SHK-9     | Shackle 9.5mm                                     |

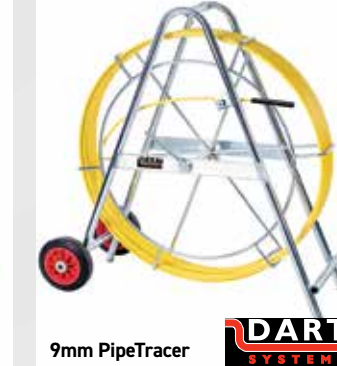
\*Repair / Accessory Kits contain 2 x End Fitting, 2 x Guide Tip, 2 x Splice and 2 x Glue



4.5mm PipeTracer



6mm PipeTracer



9mm PipeTracer



## PipeTracer - Flexitrace

The PipeTracer Flexitrace Rod can be energised by a transmitter or Genny and inserted into pipes as small as 12mm Diameter to locate pipe runs or identify blockages. The Dart Systems Flexitrace is designed to work at 33Khz and will operate with industry standard Cable Locators. These units work best with a Signal Generator with 1-3 watt output. When using 5 Watt or 10 Watt Transmitters some restrictions may apply - please contact the office for more details.

### Sonde Location

Feed the Flexitrace rod into the duct and attach a Signal Generator to both terminals of the unit, this energises the end coil housing (Sonde) and allows it to be located as a traditional Sonde using a Cable Avoiding Tool.

### Line Location

Feed the Flexitrace rod into the duct and attach a Signal Generator to one terminal of the unit and the other terminal to an earth stake. The Rod can then be located along its whole length with a Cable Avoiding Tool.

The Flexitrace locates pipes and ducts up to a depth of 3 Mtrs depending on pipe and soil conditions.

### 4.5mm PipeTracer

- 4.5mm Dia Fibreglass rod with polypropylene sheath
- Sonde 9mm Dia. x 75mm long
- Steel construction Frame
- Dimensions 560mm x 410mm x 180mm
- Friction brake

| Model No | Description                |
|----------|----------------------------|
| 300-30M  | PipeTracer 4.5mm x 30 Mtr  |
| 300-50M  | PipeTracer 4.5mm x 50 Mtr  |
| 300-80M  | PipeTracer 4.5mm x 80 Mtr  |
| 300-100M | PipeTracer 4.5mm x 100 Mtr |

### 9mm PipeTracer

- 9mm Dia Fibreglass rod with polypropylene sheath
- Sonde 9mm Dia x 75mm
- Steel construction Frame
- Dimensions 950mm x 820mm x 400mm
- Friction brake

| Model No | Description              |
|----------|--------------------------|
| 309-50   | PipeTracer 9mm x 50 Mtr  |
| 309-60   | PipeTracer 9mm x 60 Mtr  |
| 309-80   | PipeTracer 9mm x 80 Mtr  |
| 309-100  | PipeTracer 9mm x 100 Mtr |
| 309-120  | PipeTracer 9mm x 120 Mtr |
| 309-150  | PipeTracer 9mm x 150 Mtr |
| 309-200  | PipeTracer 9mm x 200 Mtr |

### 6mm PipeTracer

- 6mm Dia Fibreglass rod with polypropylene sheath
- Sonde 9mm Dia x 75mm long
- Steel construction Frame
- Dimensions 700mm x 580mm x 250mm
- Friction brake

| Model No | Description              |
|----------|--------------------------|
| 306-30   | PipeTracer 6mm x 30 Mtr  |
| 306-50   | PipeTracer 6mm x 50 Mtr  |
| 306-60   | PipeTracer 6mm x 60 Mtr  |
| 306-80   | PipeTracer 6mm x 100 Mtr |
| 306-100  | PipeTracer 6mm x 100 Mtr |
| 306-120  | PipeTracer 6mm x 120 Mtr |
| 306-150  | PipeTracer 6mm x 150 Mtr |

## C Scope Range... continued on next page

### C Scope CXL3 Cable Avoidance tool

The CXL3 is a robust and affordable analogue industry standard 'pick-up-and-go' Cable Avoidance Tool used to detect pipes and cables prior to excavations. Designed for use with an SGA3 Signal Generator.

- Power Mode, Radio Mode, Generator Mode:
- 33kHz frequency detection for locating utilities
- Liquid Crystal display (LCD)
- Real Audio response
- Provision for spare battery storage
- Retractable loudspeaker
- Annual Calibration checks required
- Fully weatherproof design to IP65
- Three year warranty (conditions apply)

| Model No   | Description                       |
|------------|-----------------------------------|
| 800-CSCXL3 | C.Scope CXL3 Cable Avoidance Tool |



## C Scope Range... continued

### C Scope CXL4 Cable Avoidance Tool

The CXL4 is a dual-frequency (33+131kHz) Cable Avoidance Tool. In-built Data Logging, Bluetooth™ connectivity and GPS tracking options. Designed for use with an SGA4 or SGV4 Signal Generator. Network Rail Approved.

- Power Mode, Radio Mode, Generator Mode:
- Simultaneous 33+131kHz
- 33kHz signal detection for all purpose tracing and utility avoidance + 131kHz for optimum detection for short length, small diameter or unearthed cables
- All Scan Mode
- Overload Protection, Alarm Zone™, Peak Hold, Dynamic Swing Sensor
- Automatic Daily Self Test
- Data Logging of all Locator activity (option)
- Data Transfer by USB. (Bluetooth™ option)
- In-Built GPS position logging (option)
- Connectivity to Survey level GPS products (option)
- High Resolution Backlit Liquid Crystal Display
- No periodic Calibration required
- Product Validation Certificate available
- Network Rail Approved

| Model No   | Description                       |
|------------|-----------------------------------|
| 800-CSDXL3 | C.Scope CXL4 Cable Avoidance Tool |



### C Scope DXL3 Cable Avoidance tool

The DXL3 is a robust and affordable analogue industry standard 'pick-up-and-go' Cable Avoidance Tool with depth measurement used to detect pipes and cables prior to excavations. Designed for use with an SGA3 Signal Generator.

- Power Mode, Radio Mode, Generator Mode:
- 33kHz frequency detection for locating utilities
- Depth Measurement
- Liquid Crystal display (LCD)
- Real Audio response
- Provision for spare battery storage
- Retractable loudspeaker
- Annual Calibration checks required
- Fully weatherproof design to IP65
- Three year warranty (conditions apply)

| Model No   | Description                       |
|------------|-----------------------------------|
| 800-CSCXL4 | C.Scope DXL3 Cable Avoidance Tool |



### C Scope DXL4 Cable Avoidance Tool

The C.Scope DXL4 is a dual-frequency (33+131kHz) Cable Avoidance Tool with Depth Measurement. In-built Data Logging as standard. Bluetooth™ connectivity and GPS tracking options available. Designed for use with an SGA4 or SGV4 Signal Generator. Network Rail Approved.

- Power Mode, Radio Mode, Generator Mode:
- Simultaneous 33+131kHz
- 33kHz signal detection for all purpose tracing and utility avoidance
- + 131kHz for optimum detection of short length, small diameter or unearthed cables.
- All Scan Mode, Accurate Depth Indication, Overload Protection, Alarm Zone™
- Peak Hold, Dynamic Swing Sensor, Automatic Daily Self Test
- Data Logging of all Locator activity
- Data Transfer by USB. (Bluetooth™ option)
- In-Built GPS position logging (option)
- Connectivity to Survey level GPS products (options)
- High Resolution Backlit Liquid Crystal Display
- No periodic Calibration required
- Product Validation Certificate available
- Network Rail Approved

| Model No   | Description                       |
|------------|-----------------------------------|
| 800-CSDXL4 | C.Scope DXL4 Cable Avoidance Tool |





**RIDGID Locator Range...** continued on next page**RIDGID Navitrack Scout**

The Navitrack Scout locator is designed to solve the most demanding remote transmitter (sonde) locates using multi-directional technology.

The locator verifies the locate position using micro-mapping display to mark distinctive poles in front of and behind the target, insuring an accurate locate. Depth is automatically calculated and displayed when over the target.

- Weight: 1.4 Kg
- Power source: 4 C-Cell Batteries
- Battery Life: 24 Hours
- Sonde Standard Frequencies: 16Hz, 512Hz, 640Hz and 33KHz

| Model No  | Description             |
|-----------|-------------------------|
| 810-19243 | Navitrack Scout Locator |

**RIDGID SR20 Locator**

For a lightweight yet rugged receiver that provides all the information needed for faster, more accurate locates.

- Target line and guidance arrows quickly identify distortion
- Proximity signal and signal strength help work through difficult locates
- Can trace frequencies from 10Hz to 35,000Hz
- Sonde frequencies 16Hz, 512Hz, 640Hz, 850Hz, 8kHz, 16kHz and 33kHz
- Power source: 4 C-Cell Batteries
- Battery life: approx 16 hours
- Weight: 1.6 Kg

| Model No  | Description                 |
|-----------|-----------------------------|
| 810-21943 | SeekTech SR-20 Line Locator |

**Ridgid Locator Range...** continued**RIDGID SR-24 Line Locator with Bluetooth and GPS**

The SR-24 is a precision utility locating instrument with GPS and Bluetooth technology for easy integration with extremal data capture devices.

The SR-24's omnidirectional antennas capture the complete signal field, making it easy to acquire the signal and trace its path. The receiver displays the utility's position and direction on the display, providing an intuitive locating experience. For added confidence, audio and visual warnings notify the operator if the shape of the signal field is being distorted so that appropriate action can be taken to avoid mismarking the utility's position.

- Large Display – shows the utility's estimated position, direction, and depth.
- Omnidirectional Antennas – capture the complete signal field for greater speed and accuracy.
- Built-In GPS - track location coordinates for mapping and GIS applications.
- Bluetooth Technology – stream data to smartphones, tablets, or high-precision GPS instruments.
- Smartphone/Tablet App – map multiple tracks and waypoints and export to GIS software.
- Can trace any frequency from 10 Hz to 35 kHz.

| Model No  | Description                               |
|-----------|---|
| 810-46393 | SR-24 Line Locator with Bluetooth and GPS |

**RIDGID ST-305 Line Transmitter**

The 5 watt ST-305 Line Transmitter lets you energise metallic lines for tracing.

**Features**

- Lightweight and compact transmitter that delivers up to 5 watts of power.
- Can transmit two frequencies simultaneously.
- Audio feedback confirms a good circuit before beginning a trace.

**Specifications**

- Direct Connect – 1 kHz, 8 kHz, 33 kHz, 262 kHz.\*
- Induction – 1 kHz, 8 kHz, 33 kHz, 262 kHz.\*
- Up to 93 kHz for devices sold in Europe.\*

| Model No  | Description                         |
|-----------|-------------------------------------|
| 810-21948 | RIDGID ST-305 Transmitter (5 Watts) |





### Rodding Sonde

The Dart Systems Rodding Sonde is a versatile and powerful, self-contained waterproof transmitter. The Sonde can be attached to Flex Rods, Cobra Rods, Drain Rods or any movable device that can be propelled inside non-metallic pipes. Used correctly you can pinpoint the exact route of the pipe and where a blockage is underground from above ground!

The Sonde emits a strong radio signal which can be tracked from above ground using an industry standard Cable Avoiding Tool (CAT) or Cable Locator which operates at the same frequency. 33Khz is the standard Sonde for most applications.

Dart Rodding Sondes are available in 33Khz or 8Khz frequency. The 33Khz unit is marked in orange and the 8Khz unit is marked in green.

The Sondes are tested to withstand drops from 1 Mtr onto concrete or similar surfaces and are also pressure tested and are therefore waterproof to a depth of at least 30 Meters. The M10 bolt can be used to connect the Sonde to a variety of pushrods, Cobras or Duct / Drain Rods. The bolt is fitted with a Nyloc insert designed to ensure that the Sonde will not unscrew during normal use.

- 33Khz – Industry standard location frequency in the UK which most cable locators can detect.
- 8 KHz – Industry standard location frequency used as an alternative when 33Khz location is difficult.

These transmitting sondes enable the user to trace non-metallic sewers, drains, ducts or pipes and to locate blockages or collapses.

If the equipment is used in a manner not specified by the manufacturer, the protection provided by the equipment may be impaired.

#### Specifications

- End Fitting – Male M10 Thread (with Nyloc threadlock)
- Construction – ABS Plastic / Stainless Steel
- Location depth – Up to 7 Mtr (23ft)
- Weight – 150g (5oz)
- Signal – 32.768Khz (Orange) or 8.192Khz (Green) Continuous
- Battery – 1 x AA Alkaline or rechargeable NiMH
- Battery Life – 100 + Hours @ 18° C
- Pressure – 3 bar, 30 Mtr
- Dimensions – 38mm Dia. x 102mm
- IP Rating – IP68
- Temperature Range – -20° C to 55° C
- Approvals – EN301 489 EN300 330 CE / FCC
- Warranty – 12 Months Full Manufacturers

| Model No | Description         |
|----------|---------------------|
| 370-100  | 33Khz Rodding Sonde |
| 370-101  | 8Khz Rodding Sonde  |

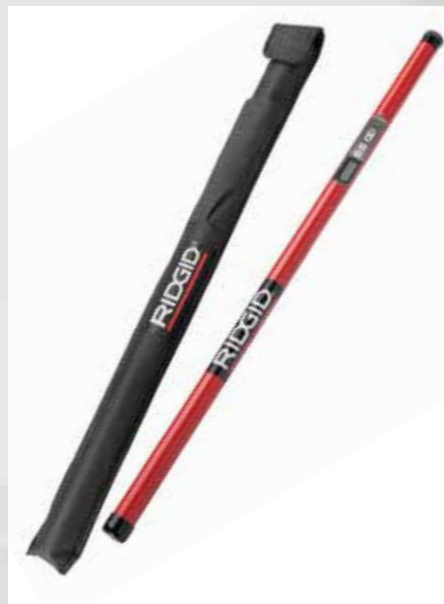
| Accessories |   |
|-------------|---|
| Model No    | Description                                     |
| 3-46-SA     | Sonde Adapter (M5 / M10)                        |
| 3-911-SA    | Sonde Adapter (M10/M12)                         |
| 3-9-FM10EF  | Female M10 End Fitting for 9mm Cobra Rods       |
| 3-BR-SA     | Drain Rod Sonde Adapter – Universal (Uni / M10) |
| 3-BT-SA     | BT Duct Rod Sonde Adapter                       |

### RIDGID MR-10 Magnetic Locator

The all new RIDGID MR-10 Magnetic Locator provides a quick and easy way of precisely locating buried iron/ steel objects.

This magnetometer provides a highly precise audio and visual feedback of buried objects and features an AutoNull feature to block nearby metallic objects such as cars and chain link fences.

- Display: Black and White LCD
- Length: 100cm
- IP54 protection
- Power: 6 x AA Alkaline Batteries
- Weight: 0.77Kg



| Model No  | Description                      |
|-----------|----------------------------------|
| 810-53068 | MR-10 Magnetic Locator with Case |

### RIDGID Remote Transmitter

Can be attached to a drain cleaning machine or jetter to locate the transmitter in a line. Can also be connected to Cobra's or Flexrod. Flashing LED indicates that the sonde is transmitting. Runs on AAA Batteries.

| Model No  | Description               |
|-----------|---------------------------|
| 810-16728 | Remote Transmitter 512Khz |



## Strap-Lock Pipe Handle

Securely grips plastic pipe from 3" - 8" (80mm - 220mm) allowing force to be applied confidently in all directions. Simplifies the installation and maintenance of large diameter plastic pipe applications.

- Provides a solid handle on hard to grip plastic pipe to easily align and set glued joints
- Specialized strap provides maximum grip and minimizes marring
- Innovative locking design for repeatable applications
- Rapid size adjustment allows you to quickly move between sizes
- Fits all sizes of plastic pipe between 3" and 8" diameter
- Works well in cold and wet environments
- Gives you maximum leverage in tight quarters
- Can be used in pairs to aid in complex installations



| Model No  | Description           |
|-----------|-----------------------|
| 411-42478 | STRAPLOCK Pipe Handle |



## RIDGID Professional Tool Storage System

The Tool Storage System Box is the choice of Professionals for conveniently having all the right tools at hand whenever they need them.

- Heavy duty design for professional use
- Made of high impact resin
- Water and dust seal for equipment protection
- Metal carrying side handle that locks each unit to the other unit
- Sturdy telescopic metal handle
- Central locking system with storing option
- All terrain rubber coated wheels
- Metal latches
- Metal lid stopper prevents lid collapse
- Inside accessories for comfortable use



| Model No  | Description                         |
|-----------|-------------------------------------|
| 810-30123 | SeekTech SR-60 Utility Line Locator |

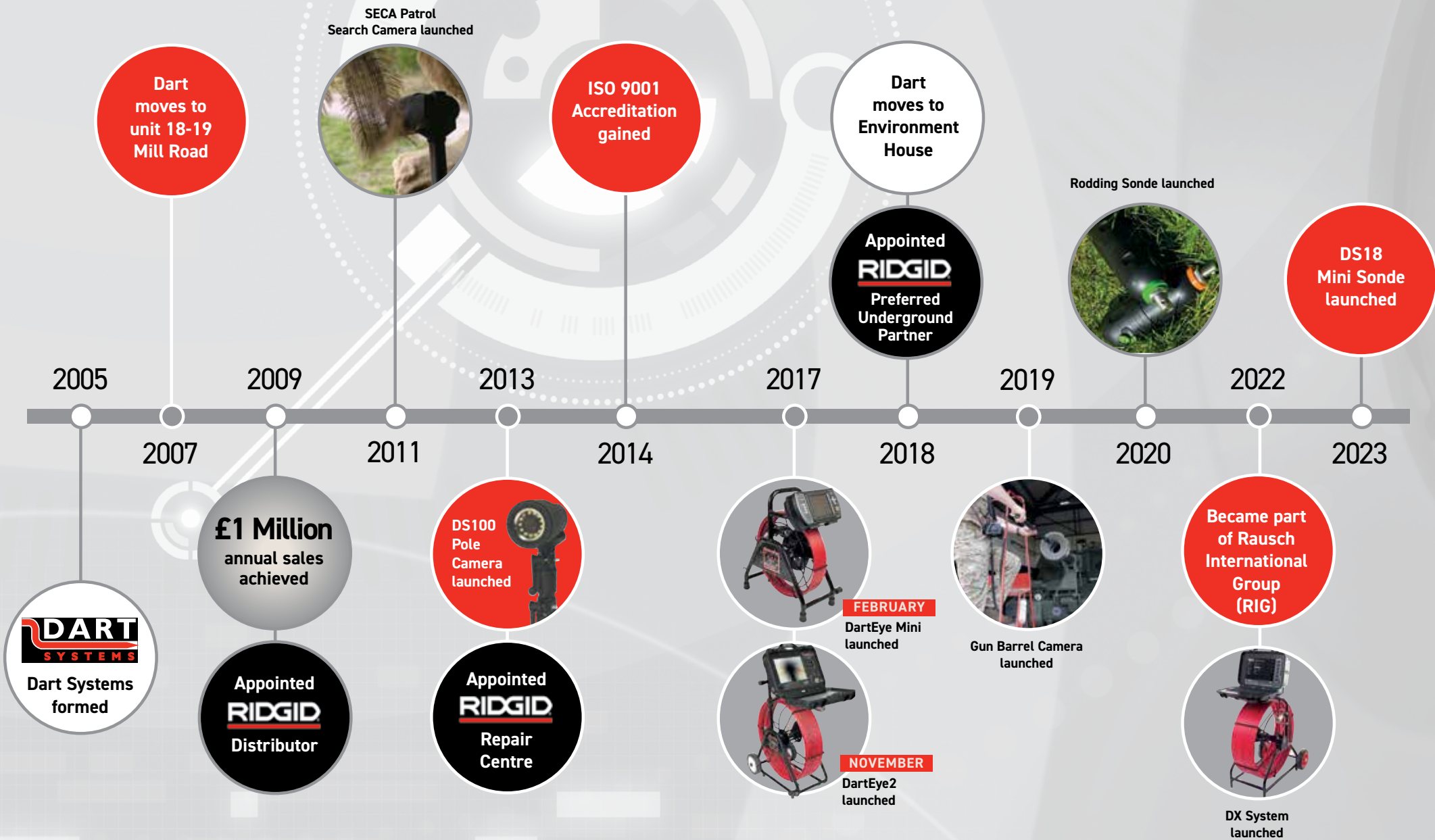


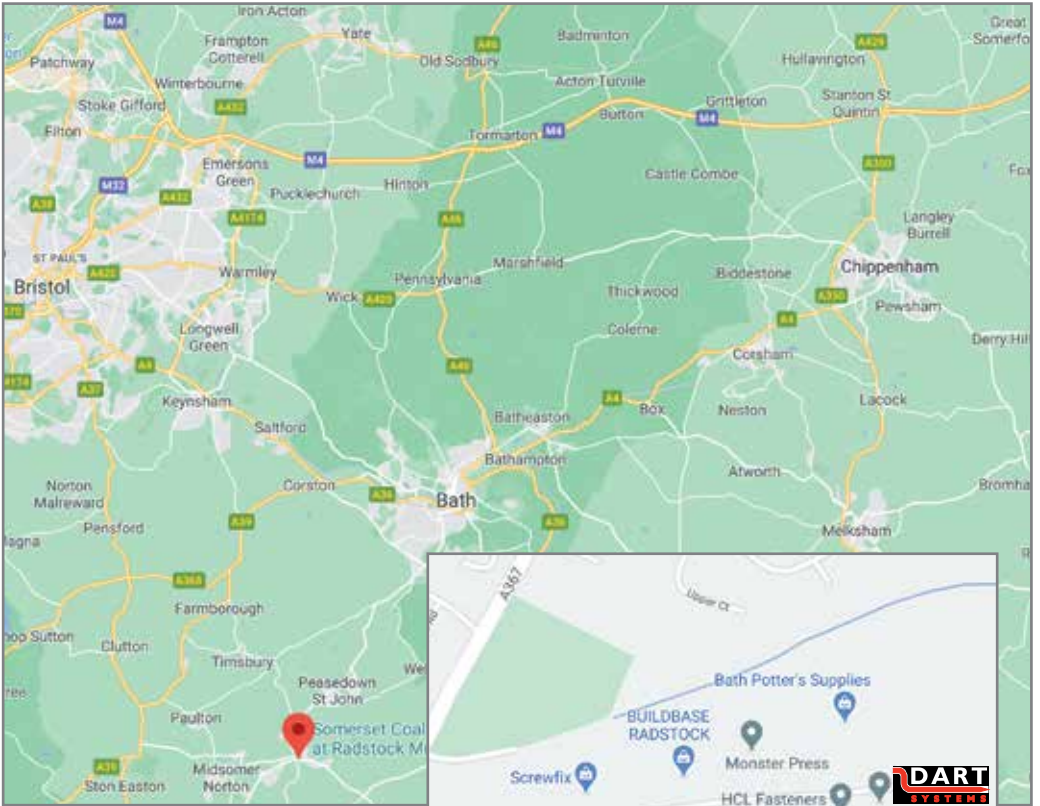
After over 10 years at our Mill Road factory, we moved in 2018 into our own facility. The move has provided much needed space for our growing manufacturing operation but also allowed us to increase our service department which will allow us to ensure that any equipment returned is back with the customer in a timely manner. Engineering has also been able to expand their capabilities recently adding a 3D printing suite and the development of an Injection Moulding facility at the new premises.

Stuart Arkell - Managing Director



# 18 years' of growth and innovation





## Helping to solve hidden problems

across a variety of private and public sector industries

All information correct at time of going to print. v5:10/23

Call **+44 (0) 1761 404 870**  
[sales@dartsystems.co.uk](mailto:sales@dartsystems.co.uk)  
[www.dartsystems.co.uk](http://www.dartsystems.co.uk)



Dart Systems Ltd, Environment House, First Avenue,  
Westfield Industrial Estate, Radstock, Somerset, BA3 4BS UK